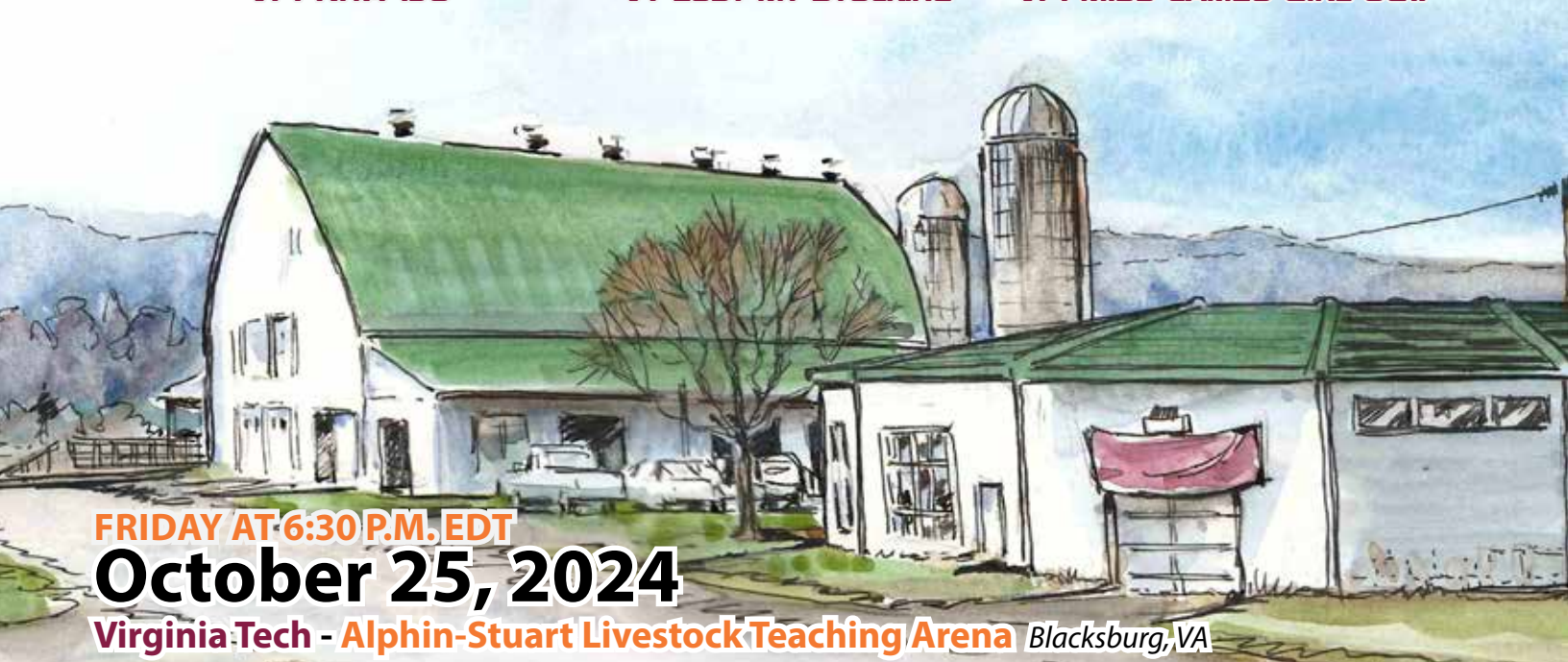




30TH Annual

HOKIE HARVEST SALE

Live Cattle Auction & Online Horse



FRIDAY AT 6:30 P.M. EDT

October 25, 2024

Virginia Tech - Alphin-Stuart Livestock Teaching Arena Blacksburg, VA

30TH Annual

HOKIE HARVEST SALE

SALE TIME AT 6:30 P.M. EDT

Friday, October 25, 2024**Virginia Tech - Alphin-Stuart Livestock Teaching Arena Blacksburg, VA****SALE DAY PHONES**

Dr. Dan Eversole (540) 641-0295 • Chad Joines (540) 557-7263 • Thomas Carper (540) 336-2737

SALE MANAGED BY**2024 Livestock Merchandising Class****RING STAFF**

Allison Bower, Elliston, VA | Senior AG TECH
 Parker Epperley, Blacksburg, VA | Senior APSC
 Sammy Leach, Midland, VA | Junior ALCE
 Lucy Hurley, Bluefield, VA | Senior DASC

SALE CLERK

Rosalie McGuirk, Bel Air, MD | Junior AAEC

SALE ADVISOR

Dr. Dan Eversole, Director, Beef Cattle Operations

AUCTIONEER

Col. Thomas Carper, Vevay, IN

SPECIAL REPRESENTATIVES

Dr. Timothy Sands President, Virginia Tech
 Dr. Mario Ferruzzi Dean, College of Agriculture and Life Sciences
 Dr. David Gerrard Director, School of Animal Sciences
 Scott Bennett President, Virginia Angus Assn.
 Brian Kidd President, Virginia Charolais Assn.
 Steve Sifford President, Virginia Hereford Assn.
 Chad Joines President, Virginia Simmental Assn.
 Brandon Reeves Executive Director, Virginia Cattlemen's Assn.

BREED REPRESENTATIVES

Reese Tuckwiller Regional Manager, American Angus Assn.
 Tommy Coley Eastern Region, American Hereford Assn.
 Doug Parke Eastern Area, Board of Trustees, American Simmental Assn.
 Isaac Hughes SE Representative, American-International Charolais Assn.

*Selling***74 HEAD OF BEEF CATTLE****Registered Purebreds & Commercial**

3 Purebred Spring Split Pairs • 13 Fall Calving Purebred Cows
 7 Spring Calving Purebred Cows • 5 Fall Calving Commercial Cows
 25 Breeding Age Bulls

ONLINE HORSE AUCTION**5 Quality Virginia Tech Bred Youngstock***Please note that we will be working through a new platform for bidding this year.*

2024 Connemara Sporthorse filly
 2024 Dartmoor Sporthorse gelding
 2024 APHA Paint Sporthorse gelding
 2023 Appendix Quarter Horse gelding
 2022 Appendix Quarter Horse gelding

(BIDDING OPENS OCTOBER 25TH AND CLOSES 6PM OCTOBER 30TH)**LIVE VIEWING OF SALE HORSES 12-6PM OCTOBER 25TH @ NEW EQUITATION BARN****Auction site:** www.spothorseauctions.com

VT Youngstock sell as the first 5 entries of the 2024 October Sport Horse & Pony Online Auction.

For additional sale horse updates: <https://www.facebook.com/VirginiaTechEquine/>**CATTLE PHOTOGRAPHY AND VIDEO**

Carrie B. Joines Photography, Blacksburg, VA

SALE BOOK PREPARED BY

Alford Livestock Service, Elberton, GA

Virginia Tech Family,

It is with great excitement that I welcome you to the 30th annual Hokie Harvest Sale, this event has and will always be one of the highlights of fall in Virginia. Dan Eversole, Chad Joines, and the 2024 Livestock Merchandising Class, have been working diligently to continue this event's legacy.

Plantation Road is one of those exciting landmarks with in the fall sale season that we celebrate the vigor of the nationally recognized beef program at Virginia Tech and reconnect with so many that impacted us over the years. This year's event has been enhanced with the celebration of the Livestock Hall of Fame and a home football game against Georgia Tech to follow on Saturday.

The genetics within the pages to follow are relevant with power and functionality. They carry a prefix that has been enamored over time by many organizations across the nation, and more importantly, they are worthy of your appraisal. I am personally excited to be a part of bringing a select group of Charolais females back to the offering and to merchandise three Virginia Tech Statesman full brothers that rival the quality of their popular sire. I had the pleasure of viewing the offering in late August and I am always available to assist you. Please reach out to the marketing team or myself so that we can enhance your experience.



Sincerely,

Thomas Carper

The Sterling Group
 Vevay, Indiana (540) 336-2737



Dr. Dan E. Eversole
3250 Litton-Reaves Hall (0306)
175 West Campus Drive
Blacksburg, Virginia 24061
Office: (540) 231-4738
Fax: (540) 231-5014
deversol@vt.edu
www.apsc.vt.edu



COLLEGE OF AGRICULTURE AND LIFE SCIENCES
SCHOOL OF ANIMAL SCIENCES
VIRGINIA TECH

On behalf of the School of Animal Sciences at Virginia Tech, my Livestock Merchandising class and I would like to welcome you to the 30th Annual Hokie Harvest Sale. Please accept this letter as your personal invitation to join us on Friday, October 25th at 6:30 PM EDT for our annual event. After three decades of teaching Livestock Merchandising, I have been pleased with the student interest and relevance of this course in the undergraduate curriculum for the School of Animal Sciences. Over 2,000 students from various majors and colleges have enrolled in this course since its inception in 1995 and have later become industry leaders and prominent livestock producers. Don't miss out on this opportunity to witness another wave of future industry leaders in action!

The Hokie Harvest Sale has developed a significant reputation over the years for selling high quality, university-owned livestock and is unique to this land-grant university because it has been organized and managed by students in an experiential learning environment. Both two- and four-year students have gained "hands-on" experience in sale management, budgeting, advertising, cataloging, clerking, and livestock photography. This year's class has worked extremely hard in the planning and preparation of this year's production sale, which includes a live auction of 74 head of registered and commercial beef cattle and five quality horses being sold exclusively through an online auction at www.spothonlineauctions.com. Additional updates on all sale horses will start in September and can be found at <https://www.facebook.com/VirginiaTechEquine/>

Our commitment to our customers has always been to provide cattle that are profitable in a variety of situations. The beef cattle program strives to raise the most predictable genetics available and will feature both purebred and commercial beef cattle. Breeders of purebred Hereford, Simmental, Charolais, and Angus cattle will be able to select AI-sired progeny from a cross-section of the VT Beef Cattle herd. The purebred females are sired by and mated to recognized, proven, and popular breed-leading AI sires and will provide a golden investment opportunity for those who have limited AI knowledge or expertise. These females combine curve-bending GE-EPDs with proven production records while our promising herd sires stem from predictable cow families. A strong set of commercial cows (both fall and spring-calving) and bred heifers of SimAngus origin will also be offered. SaleRing.live will provide online bidding for the cattle sale if you feel more comfortable with that format. If so, you must register at www.salering.live/register at least 15 minutes before the sale using Google Chrome in order to watch/bid online in real-time. Complimenting this service, video is available on all sale cattle which can be accessed at <https://www.apsc.vt.edu/facilities0/beef-center.html> or at www.salering.live. Sale cattle will be on display throughout the week of the sale but will not be brought into the sale ring which is different from earlier years.

Our equine program is selling an excellent online offering of five quality horses. Please join us as we showcase these well-bred horses in a live viewing from 12-6 PM on sale day. Bidding opens October 25 and closes October 30 at www.spothonlineauctions.com as the first five entries of the 2024 October Sport Horse and Pony Online Auction.

The School of Animal Sciences takes great pride in our university, our livestock, and especially our students. We encourage you to 'Come Experience the Harvest' on Friday, October 25th and get to know this great group of future industry leaders. Funds generated from the Hokie Harvest have and will continue to provide funding critical to the survival of departmental programs. Many thanks to all of you for your past support and interest in our beef cattle and equine teaching programs. We are committed to making you a satisfied customer and are here to assist you in any way we can.

Sincerely,



Dr. Dan Eversole, Director
Beef Cattle Programs



Chad Joines, Director
Beef Cattle Operations

VIRGINIA POLYTECHNIC INSTITUTE AND STATE UNIVERSITY
An equal opportunity, affirmative action institution

OCTOBER 25, 2024 at 6:30 p.m. EDT



Sale Day Activities

Noon – 6:00pm
3:00 – 7:00 pm
4:30 – 6:30 pm
6:30 pm

Showcase of Sale Horses in Equitation Barn and in Alphin-Stuart Arena
Buyer Registration in the Beef Cattle Barn
Complimentary **Barbecue Dinner** in the Alphin-Stuart Classroom
Cattle Sale in Alphin-Stuart Arena

GENERAL INFORMATION

SALE HEADQUARTERS (GPS Address)

Beef Cattle Center and Alphin-Stuart Livestock Arena
500 Plantation Road - Virginia Tech
Blacksburg, Virginia 24061

BEEF CATTLE CONTACT

Dr. Dan Eversole

(540) 231-4738 office

(540) 641-0295 cell

deversol@vt.edu

Chad Joines

(540) 231-6280 barn office

(540) 557-7263 cell

cjoines@vt.edu

HORSE CONTACT

Natalie Slone

(540) 231- 4366 office

(703) 473-2068 cell

nbduncan@vt.edu

LIABILITY

All persons who attend the sale do so at their own risk. Neither Sale Management, Virginia Tech, nor any person connected with the sale assume any liability, legal or otherwise, for any accidents that may occur. Students and staff will be available and happy to answer questions about sale animals and present them for inspection. PLEASE DO NOT BRING DOGS ONTO SALE GROUNDS.

INSPECTION

Cattle are available for inspection at your convenience during the week and on sale day.

ABSENTEE BIDDERS

Buyers unable to attend the sale may send their bids to Dr. Dan Eversole, Mr. Chad Joines, or Col. Thomas Carper.

AIR TRANSPORTATION

Blacksburg is a 45-minute drive from the Roanoke-Blacksburg Regional Airport, which is easily accessible to Interstate 81 and Rt. 460 Bypass. American, Allegiant Air, Delta, and United Airlines serve the ROA Airport.

LODGING ACCOMMODATIONS

Hyatt Place

Residence Inn by Marriott

Hilton Garden Inn

The Inn at Virginia Tech

(540) 552-7500

(540) 750-4400

(540) 552-5005

(540) 231-8000

TERMS & CONDITIONS

Cattle sell under the Standard Terms and Conditions as suggested by the American Hereford Association, American Angus Association, American-International Charolais Association, and the American Simmental Association. Cash or good check will be accepted. All purchases are to be settled for at the conclusion of the sale and will remain at the VT Beef Center until proper settlement is made.

REGISTRATIONS & TRANSFER

Registration certificates will be transferred to the buyer at the seller's expense. Buyers must provide full name and address for transfer. Association member codes would be helpful if you are a member of a purebred breed association; however, this is not required to purchase cattle. Animal transfers will be done after settlement.

HEALTH REQUIREMENTS

1. All cattle for sale will meet the health requirements of the Commonwealth of Virginia and appropriate health papers will be furnished for interstate shipment. Every female (4-12 mo.) has been calf-hood vaccinated for Brucellosis.
2. If sale cattle are returned to the seller for an adjustment, they must meet health requirements of the Commonwealth of Virginia.
3. Yearling bulls have undergone a breeding soundness examination (BSE) and are considered satisfactory breeders as defined by the Society of Theriogenology. Buyers will be given a copy of the BSE results.

BREEDING GUARANTEE

Bulls are guaranteed to be breeders (defined as the ability to settle healthy cows by the time they are 14 months of age) with exception of:

- a. Injury or disease occurring to the animal after time of purchase.
- b. Gross negligence or willful misconduct on the part of the purchaser.

HERD HEALTH

All pregnant females were given a pre-breeding vaccine which consisted of a modified-live virus IBR-PI3, BVD, BRSV, and a 5-way Lepto bacterin. Any questions concerning general herd health can be directed to Dr. John Currin, College of Veterinary Medicine (0442), Virginia Tech, Blacksburg, VA 24061, (540) 231-9041.

ANNOUNCEMENTS

Announcements from the auction block will take precedence over printed material in this sale book. Virginia Tech reserves the right to withdraw any sale lot from the sale that does not meet their specifications prior to the sale.

EPDs represented in this sale book were current at the time requested for the layout and printing of this sale book. EPDs are recalculated throughout the year by the respective breed associations, which mean the figures represented in this book may change for these animals in the future.

FOR MORE PICTURES, VIDEOS, AND DETAILS

Cattle Sale Links <https://sas.vt.edu/facilities/beef-cattle-center.html> or www.salering.live
Horse Sale Links www.sporhorseauctions.com or <https://www.facebook.com/VirginiaTechEquine>



Livestock Merchandising Class

September 8, 2024

Dear friends, supporters, and fellow Hokies,

The 2024 Livestock Merchandising Class at Virginia Tech is honored and pleased to present you the 30th annual Hokie Harvest Sale Catalog. We are excited to invite you to our in-person sale on Friday October 25th at 6:30pm at our very own Alphin-Stuart Livestock Arena located on Plantation Road in Blacksburg, Virginia.

Now in its 30th year, this annual auction continues to be a joint effort among all students enrolled in the Livestock Merchandising class. Throughout this class we have had an abundant number of amazing guest lecturers who have thoroughly prepared us for planning and overseeing this sale. Overseeing the Hokie Harvest Sale teaches each class member a valuable skill set on how to manage and coordinate a successful livestock production sale, while providing high quality, hand-picked livestock to the public. The 30th Annual Hokie Harvest Sale will showcase an amazing selection of 74 purebred Angus, Simmental, Hereford, Charolais, and commercial cattle. This year's auction includes a strong set of 5 fall calving commercial cows, 13 fall calving purebred cows, 7 spring calving purebred cows, 3 purebred spring pair splits, and 25 potential herd sire prospects!

The Hokie Harvest Sale also offers five excellent young horses. We have a 2024 Connemara Sporthorse filly, a 2024 Dartmoor Sporthorse gelding, a 2024 APHA Paint Sporthorse gelding, a 2023 Appendix Quarter Horse gelding, and a 2022 Appendix Quarter Horse gelding. Several of these horses are registered with the American Quarter Horse Association (AQHA) or the American Paint Horse Association (APHA). The online auction opens Friday, October 25th and closes Wednesday, October 30th at 6 PM. All horses will be showcased at the Hokie Harvest Sale Horse Preview on October 25th from 12-6 PM so join us in the New Equitation Barn, located next to the Alphin-Stuart Livestock Arena, to view them yourselves! All proceeds from the Hokie Harvest Sale directly benefit the students in the School of Animal Sciences and its programs.

We appreciate your invaluable support and invite you to attend a complimentary barbeque dinner served prior to sale time in the Alphin-Stuart Livestock Teaching Arena beginning at 4:30 PM until sale time. Join us in fellowship while enjoying some delicious food. Thank you for your continued support and interest in helping us further our education as we serve you. "Come Experience the Harvest" with us on October 25th at the 30th Annual Hokie Harvest Sale. We look forward to seeing you!

Sincerely,

Salem Sifford & Parker Epperley

Catalog and Social Media Committee



COLLEGE OF AGRICULTURE AND LIFE SCIENCES
SCHOOL OF ANIMAL SCIENCES
VIRGINIA TECH.



Spring Bred Cows



VPI MISS CAMEO GIRL 821F

Lot 1

1

VPI MISS CAMEO GIRL 821F

Birth Date: 09/02/2018 Cow F1269715 Tattoo: 821F

Purebred
Charolais

LT BLUEGRASS 4017 P
LT BLUE VALUE 7903 ET
EM745516 LT UNLIMITED MAID 7184 P



VPI FREE LUNCH 708T

VPI CAMEO GIRL 631D

F1237723 VPI CAMEO GIRL 702T

LT ASSERTION 1277 P
LT PEARL'S BREEZE 2236 P
LT UNLIMITED DUKE 1172 P
LT UNLIMITED LASS 2156 P
LT RIO BLANCO 1234 P
VPI MISS DUCHESS 404 P
LT EASY PRO 1158 PLD
VPI CAMEO GIRL 505R

\$ INDEX

TSI +253.89

EPDS

CED	BW EPD	VW EPD	YW EPD	Milk	MARB	REA	BF
+12.1 35%	-1.4 40%	+64 30%	+105 50%	+19 75%	+0.62 1%	+31 100%	+0.50 100%

- Homozygous Polled and PA free
- Charolais females are a new addition to the Hokie Harvest Sale as we continue to create enthusiasm around our event. 821F is sure to draw that national recognition and participation that we want to foster.
- This Blue Value daughter has breed-leading genomics coupled with breath-taking phenotype.
- She is the third-ranking female in the Charolais breed for MARB (0.62 with a minimum of .20 accuracy) and ranks in the top 3% for MCE.
- This matriarch has been a cornerstone within our Charolais program and is credited for producing VT Miss Cameo Girl 412M, VPI Miss Cameo Girl 231K, and VPI Miss Cameo 025H, all of which maintain curve-bending traits with that elite 1% ranking for MARB.
- This gem is a true highlight from the heart of our Charolais program as she ratios seven traits @ or above 100.
- A flush was sold to Quaker Hill Farm, Louisa, VA in the 2022 Leading Ladies in Hokie Nation Online Sale.
- AI'd 4/25/2024 to WC Encompass 0507 P; due approximately 2/1/2025.



WC ENCOMPASS 0507 P

Service sire of Lot 1

VPI TIARA 207K

Lot 2



VPI MISS FALLS 110J

Lot 3



CHAROLAIS SPRING BREDS

2 VPI TIARA 207K

Birth Date: 01/26/2022 Cow F1322827 Tattoo: 207K

Purebred
Charolais

WR WRANGLER W601

WR FOREMAN D602

M883344

WR DUCHESS B612



LT BLUEGRASS 4017 P

VPI TIARA 301A

F1170168

VPI TIARA 121Y

CMF 192 WRANGLER 256

WR MISS PRINCESS T629

LT LEDGER 0332 P

WR DUCHESS Y601

LT ASSERTION 1277 P

LT PEARL'S BREEZE 2236 P

VPI FREE LUNCH 708T

VPI TIARA 806U

EPDS

\$ INDEX

TSI +255.80

CED	BW EPD	VWV EPD	YW EPD	Milk	MARB	REA	BF
+12.7 35%	-1.0 55%	+50 90%	+103 75%	+12 100%	+0.44 1%	+3.8 100%	+0.030 85%

- Polled and PA free
- Elegance and youthfulness are married with curve bending EPDs in this two-year-old sired by WR Foreman D602.
- This Tiara female represents a famous cow family within the breed that has extreme productivity.
- She is a sure fit for embryo transfer to accelerate any program.
- Tiara 207K ranks in the elite 1% of the breed for MARB, upper 2% for SCRO while rationing @ 105 for both ADG and WPDA at weaning.
- AI'd 4/24/2024 to WC Encompass 0507 P; due approximately 1/31/2025.

3 VPI MISS FALLS 110J

Birth Date: 02/18/2021 Cow F1308168 Tattoo: 110J

Purebred
Charolais

LT RUSHMORE 8060 PLD

LT AFFINITY 6221 PLD

M880381

LT ATHENA 1247



VPI FREE LUNCH 708T

VPI MISS FALLS 830F

F1272742

VPI MISS FALLS 620D

LT RIO BRAVO 3181 P

LT BRENDA'S EASE 3055PLD

WINN MANS LANZA 610S

LT SILVER ATHENA 7123 P

LT RIO BLANCO 1234 P

VPI MISS DUCHESS 404 P

WCR SIR DUKE 7340 P

VPI MISS FALLS 426B

EPDS

\$ INDEX

TSI +252.41

CED	BW EPD	VWV EPD	YW EPD	Milk	MARB	REA	BF
+18.1 2%	-7.0 1%	+56 60%	+101 60%	+21 65%	+0.37 2%	+2.3 100%	+0.053 100%

- Homozygous Polled and PA free
- Backed by Affinity, this Charolais female has raised two elite sons that demonstrate her maternal superiority in translating power and performance while ensuring calving-ease and carcass quality.
- Her maternal granddam was a featured lot that sold to Gerrard Ranches, Riner, VA in the 2022 Leading Ladies in Hokie Nation Online Sale.
- Ratios for all weaning traits are greater than or equal to 104, while being in the elite 1% for BW, 2% for MARB, and 2% for CED.
- AI'd 4/25/2024 to WC Inferno 6561 P; due approximately 2/1/2025.

OCTOBER 25, 2024 at 6:30 p.m. EDT



VPI RITA 1J8

Lot 4



VPI SHADOE 1J18

Lot 5



4 VPI RITA 1J8

Birth Date: 02/18/2021 Cow *20085213 Tattoo: 1J8 Angus

		S A V RAINFALL 6846		COLEMAN CHARLO 0256		\$ INDEXES	
SQUARE B	19405246	TRUE NORTH 8052		S A V BLACKCAP MAY 4136		\$M	+60 50%
		ELBANNA OF CONANGA 1209		CONNEALY CONSENSUS		\$W	+74 10%
				ELBASTA OF CONANGA 9703		\$F	+85 55%
						\$G	+69 10%
		MSA DIESEL POWER 5C15		PA FULL POWER 1208			
		VPI RITA 8F10		MSA SHAWNEE 0X8			
19169179		VPI BLACKBIRD 5C17		DEER VALLEY ALL IN		\$B	+153 30%
				VPI BLACKBIRD 0X11		\$C	+258 30%

CED	BW EPD	WW EPD	YW EPD	Milk	Marb	RE	FAT
+11 15%	-.6 15%	+67 30%	+124 20%	+35 10%	+.84 20%	+1.02 10%	-.022 15%

- VPI Rita 1J8 embodies what we strive to build within our Angus program that being soundness and power backed by superior numbers and ratios.
- This True North three-year-old is among the top 10% and 15% for CED and BW, respectively, and has 12 other traits in the upper 20% of the breed.
- Posts a WWR of 1@117.
- If you're in the business of producing donor quality females or sought-after pure-bred bulls, this female checks the boxes to enhance any program.
- AI'd 4/25/2024 to Stellflug Hoffman RiseAbove; due approximately 2/1/2025.

5 VPI SHADOE 1J18

Birth Date: 08/29/2021 Cow *20265251 Tattoo: 1J18 Angus

		MUSGRAVE BIG SKY		CONNEALY EARNAN 076E		\$ INDEXES		
MUSGRAVE	18194415	SKY HIGH 1535		SAV PRIMROSE 7861		\$M	+37 95%	
		FLAG QUEEN W 00649		SA V 004 DENSITY 4336		\$W	+59 40%	
				PLATTEMERE QUEEN W 660		\$F	+116 10%	
				B/R NEW DAY 454		\$G	+42 60%	
		V A R RESERVE 1111		SANDPOINT BLACKBIRD 8809		\$B		+158 25%
		VPI SHADOE 4B17		SA VIRON MOUNTAIN 8066		\$C		+242 45%
		18051684		VPI SHADOE 2Z24		SHADOE 1062 OF FOXCROSS		
						EPDS		

CED	BW EPD	WW EPD	YW EPD	Milk	Marb	RE	FAT
+2 80%	+4.9 95%	+72 15%	+119 25%	+28 40%	+.41 65%	+.82 20%	+.030 70%

- Shadoe 1J18 is from the heart of our program and backed by the phenotypic masterpiece Musgrave Sky High 1535, who was the high-selling selection from the Musgrave program in 2016 and still one of the breed's most popular sires.
- This female ranks in the top 15% of the breed for WW as well as measuring in the top 10% of the entire breed for Claw and \$F.
- AI'd 4/24/2024 to Virginia Tech Statesman; due approximately 1/31/2025.



VPI SAVANNAH J167

Lot 6

6

VPI SAVANNAH J167

Birth Date: 04/04/2021 Cow 3915455 Tattoo: J167

Simmental
PB SM

SFG CHAIRMAN F8315

3609120

SFG QUEEN B01



MCM TOP GRADE 018X

VPI SHESAVANNAH B463 ET

2868502

EBS SHEZA ANDRIAS DREAM

W/C UNITED 956Y

MISS WERNING KP 8543U

MCM TOP GRADE 018X

SFG QUEEN Z11

MR NLC UPGRADE U8676

MCM 513R

CNS DREAM ON L186

TRIPLEC SHESAVANNAH K137

EPDS

\$ INDEXES

API	+144.5
TI	+84.3

CED	BW EPD	WW EPD	YW EPD	Milk	MARB	REA	BF
+13.8 20%	+1.5 55%	+85.9 25%	+131.8 20%	+20.6 70%	+0.14 60%	+0.97 30%	-.094 15%

- Homozygous Black and Homozygous Polled
- This purebred female ranks in the top 25% of the breed for 10 key traits, highlighted by measuring in the upper 5% of the breed for MCE and top 15% for B Fat.
- Savannah J167 is backed by one of our most prolific Top Grade daughters, Shesavannah B463.
- This maternal tribe is one of our highest earning and always a favorite on sale day.
- AI'd 5/20/2024 to WHF/JS/CCS Woodford J001; due approximately 2/26/2025.

7

VPI SHADOE J184

Birth Date: 10/12/2021 Cow 4006953 Tattoo: J184

SimAngus™
5/8 SM 3/8 AN

WLE COPACETIC E02

3299037

CMFM JOY 02ZB



HILB ORACLE C033R

VPI SHADOE F886 ET

3537903

VPI SHADOE 1Y28

W/C UNITED 956Y

MISS WERNING KP 8543U

MCM TOP GRADE 018X

SFG QUEEN Z11

MR NLC UPGRADE U8676

MCM 513R

CNS DREAM ON L186

TRIPLEC SHESAVANNAH K137

EPDS

\$ INDEXES

API	+117.9
TI	+74.7

CED	BW EPD	WW EPD	YW EPD	Milk	MARB	REA	BF
+15.2 25%	-1.5 25%	+67.8 80%	+96.6 90%	+16.8 95%	+0.28 65%	+0.6 65%	-.065 20%

- Homozygous Black and Homozygous Polled
- Shadoe J184 is a proven herd bull-maker that is integrated with calving-ease, ranking in the top 25% of the breed.
- Her presence within carcass values is merit worthy as well with a top 20% showing in YG.
- J184 has always been a SimAngus standout with individual performance ratios of 100, 122, and 108 for WW, IMF, and B Fat, respectively.
- AI'd 4/24/2024 to WCC/RRF Troubador 0130H; due approximately 1/31/2025.



**PATHOLOGY
CONSULTANTS**
of Central Virginia, Inc.

Phone: (434)-947-3925



Split Pairs

8 VPI RACHELS BLAZE K202(K201)

Birth Date: 09/16/2024 Cow P44358739 Tattoo: K201 Polled Hereford

R LEADER 6964
BOYD 31Z BLUEPRINT 6153
P43764491 NJW 91H 100W RITA 31Z ET



/S MANDATE 66589 ET

VPI RACHELS BLAZE H002

44155418 VPI RACHELS BLAZE C503

HYALITE ON TARGET 936
R MISS REVOLUTION 1009
NJW 73S M326 TRUST 100W ET
REMITALL RITA 91H

R LEADER 6964
/S LADY DOMINO 0158X
CHURCHILL RED BULL 200Z
VPI RACHELS BLAZE Z207

\$ INDEXES

BMI\$	+500
BII\$	+584
CHB\$	+100

EPDS

CED	BW EPD	WW EPD	YW EPD	MM	MARB	REA	FAT
+10.8 6%	+0.2 9%	+58 40%	+84 66%	+29 34%	+11 51%	+31 77%	+0.62 92%

- Heterozygous Polled
- Rachels Blaze K202 is one of the most celebrated females from our Hereford division.
- She posts six traits in the top 5% of the entire Hereford breed and ranks in the top 10% for CED and BW.
- Phenotypically K202 checks the boxes to grace your donor pen. Her flawless udder and feminine build offer an immense amount of breeding versatility.
- She has proven herself in production with a superior Cuda heifer calf that is elite in her own right.
- AI'd 5/25/2024 to Mohican Bar Star Revved Up 78A; due approximately 3/3/2025.

8A VT RACHELS BLAZE M401

Birth Date: 01/16/2024 Cow P44577291 Tattoo: M401 Polled Hereford

NJW 73S M326 TRUST 100W ET
BEHM 100W CUD 504C
P43636764 BEHM R294 JASMAN102Y



BOYD 31Z BLUEPRINT 6153

VPI RACHELS BLAZE K202

P44358739 VPI RACHELS BLAZE H002

HYALITE ON TARGET 936
R MISS REVOLUTION 1009
NJW 73S M326 TRUST 100W ET
REMITALL RITA 91H

R LEADER 6964
NJW 91H 100W RITA 31Z ET
/S MANDATE 66589 ET
VPI RACHELS BLAZE C503

\$ INDEXES

BMI\$	+387
BII\$	+482
CHB\$	+155

EPDS

CED	BW EPD	WW EPD	YW EPD	MM	MARB	REA	FAT
+12.5 3%	-0.4 6%	+65 14%	+103 17%	+34 10%	+33 9%	+66 14%	+0.32 62%

- Heterozygous Polled
- This weaned heifer calf, sired by Cuda, embodies the vision for our Hereford program with impeccable build phenotypically and a bulletproof EPD profile.
- She ranks among the top 15% of the breed for nine key indicators with highlights in the upper 3% and 6% for CED and BW, respectively.



VPI SAVANNAH K265

Lot 9

9 VPI SAVANNAH K265

Birth Date: 03/23/2022 Cow 4054239 Tattoo: K265 SimAngus™ 1/2 SM 1/2 AN

JINDRA ACCLAIM
VPI ACCLAIM 8F34 ET
4054144 VPI SHADOE 1Y28



SFG COWBOY LOGIC D627

VPI SAVANNAH H074

3740495 VPI SAVANNAH E759

JINDRA 3RD DIMENSION
JINDRA BLACKBIRD LASSY 1111
S A V BISMARCK 5682
SHADOE 1062 OF FOXCROSS
CCR COWBOY CUT 5048Z
SFG QUEEN B01
CCR SPARTAN 9124A
VPI SHESAVANNAH A389

\$ INDEXES

API	+132.0
TI	+86.1

EPDS

CED	BW EPD	WN EPD	YW EPD	Milk	MARB	REA	BF
+16.3 15%	-0.8 35%	+81.7 30%	+128.9 30%	+20.4 80%	+0.45 40%	+44 90%	-0.02 90%

- Homozygous Black and Homozygous Polled
- VPI Savannah K265 has impeccable ratios: WW @ 110, IMF @ 108, B FAT @ 133, and REA @ 103.
- This two-year-old Simmental half-blood female has the build to be a great addition to your program with soundness and angularity as some of her strongest attributes.
- Her SimAngus bull calf at side is an exciting son of MR SR MIC DROP G1534.
- AI'd 4/24/2024 to JC MR Pontiac D114K; due approximately 1/31/2025.

9A VIRGINIA TECH STANDOUT M440

Birth Date: 01/15/2024 Bull 4362988 Tattoo: M440 SimAngus™ 3/4 SM 1/4 AN

OMF EPIC E27
SCHOOLEY STANDOUT 27G
3585120 CLRS BEAUTY QUEEN 420 B



VPI ACCLAIM 8F34 ET

VPI SAVANNAH K265

4054239 VPI SAVANNAH H074

WS ALL-AROUND Z35
OMF TIME LESS B100
CCR COWBOY CUT 5048Z
TSN MISS 1407 P146

JINDRA ACCLAIM
VPI SHADOE 1Y28
SFG COWBOY LOGIC D627
VPI SAVANNAH E759

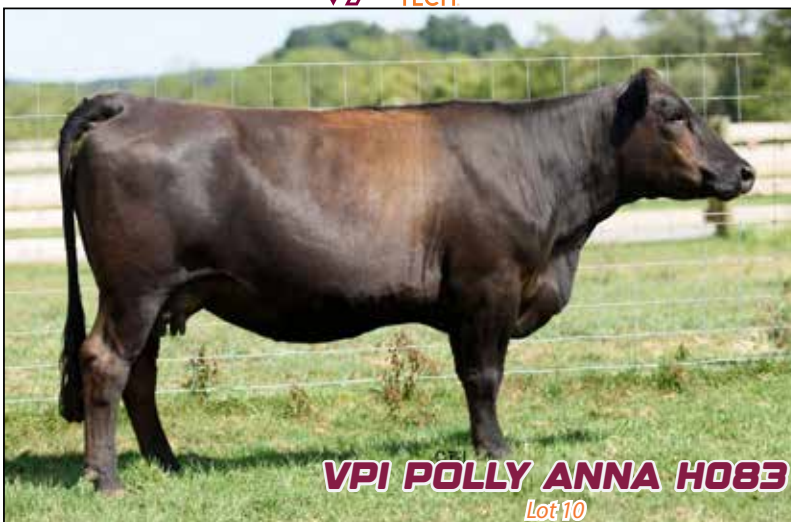
\$ INDEXES

API	+133.3
TI	+79.7

EPDS

CED	BW EPD	WN EPD	YW EPD	Milk	MARB	REA	BF
+15.2 25%	-2.0 20%	+74.6 55%	+123.8 40%	+23.6 55%	+0.24 75%	+66 55%	-0.47 45%

- Homozygous Black and Homozygous Polled
- M440 is a mild-mannered three-quarter-blood bull calf that ranks in the top 4% of the breed for DOC.
- This herd sire prospect sired by Mic Drop maintains a huge spread for growth on paper and ranks in the top 20% for BW.



10

VPI POLLY ANNA H083

Birth Date: 09/02/2020 Cow 3891739 Tattoo: H083

Simmental
PB SM

WS ALL-AROUND Z35
OMF EPIC E27
3317371 OMF TIME LESS B100
CDI INNOVATOR 325D
VPI POLLY ANNA F878
3537898 VPI POLLY ANNA B465 ET

WS BEEF KING W107
CDI MS HIGH ROLLER 39W
OMF COMMANDER Y69
OMF TIMELESS Z21
TJ MAIN EVENT 503B
CDI MS SHEAR FORCE 49U
MR NLC UPGRADE U8676
KDG POLLY ANNA P89
EPDS

\$ INDEXES

API +139.8
TI +90.2

CED	BW EPD	WW EPD	YW EPD	Milk	MARB	REA	BF
+12.2 40%	+1.5 55%	+90.9 15%	+130.1 25%	+25.9 30%	+0.27 35%	+1.16 10%	-.077 50%

- Homozygous Black and Homozygous Polled
- Polly Anna H083 is an exceptional productive female that stands in the top 10% of the Simmental breed for REA and CW.
- Growth EPDs for this purebred Epic daughter reflect an upper 15% and 25% ranking for WW and YW, respectively.
- Her individual performance ratios are stellar as she records the following: REA @ 101, YW @ 104, WW @ 106.
- The Clear Advantage son at side has the trajectory to become a breed-changing sire as he ranks in the upper 20% for both API and TI.
- Al'd 4/24/2024 to M4 Alpha 267K; due approximately 1/31/2025.

10A

VIRGINIA TECH ADVANTAGE M458

Birth Date: 02/12/2024 Bull 4362975 Tattoo: M458

Simmental
PB SM

LLSF VANTAGE POINT F398
CLRWR CLEAR ADVANTAGE H4G
3858588 WS MISS SUGAR C4

CCR ANCHOR 9071B
HPF RITE 2 LUV 398D
CLRS GRADE-A 875 A
WS ANISE A71
WS ALL-AROUND Z35
OMF TIME LESS B100
CDI INNOVATOR 325D
VPI POLLY ANNA B465 ET
EPDS

OMF EPIC E27
VPI POLLY ANNA H083
3891739 VPI POLLY ANNA B465 ET

\$ INDEXES

API +154.6
TI +90.5

CED	BW EPD	WW EPD	YW EPD	Milk	MARB	REA	BF
+14.5 15%	-1.6 10%	+76.9 55%	+113.0 60%	+25.9 30%	+0.45 15%	+0.81 65%	-.075 50%

- Homozygous Black and Homozygous Polled
- This stout purebred son of Clear Advantage is sure to be a favorite on sale day by those who value carcass traits.
- With an actual BW of 74#, M458 ranks in the top 15% of the breed for CED and MARB.
- API and TI values rank this exciting herdsire prospect in upper 20%.

Your John Deere Dealer for Kentucky, North Carolina,
Tennessee, Virginia and West Virginia for Farm, Home,
and Compact Construction Equipment



OCTOBER 25, 2024 at 6:30 p.m. EDT



VPI VANNA 826F

Lot 11



VPI MISS FALLS 020H

Lot 12



11 VPI VANNA 826F

Birth Date: 09/04/2018 Cow EF1272724 Tattoo: 826F

Purebred
Charolais

SPARROWS FARGO 811U
RBM FARGO Y111
EM809088 HC RHINESTONE 5100
ACA
EATONS LEADER 2233 P
VPI VANNA 630S P ET
EF1059730 THREE TREES VANNA 1981ET

WINN MANS LANZA 610S
SPARROWS DELIGHT 74L
LT EASY PRO 1158 PLD
HC JACK 2082
EATONS CANDIDATE 9177
EATONS RHODORA 9506
LHD CIGAR E46
JWK VANESSA D029 ET
EPDS

\$ INDEX
TSI +274.59

CED	BW EPD	WW EPD	YW EPD	Milk	MARB	REA	BF
+11.9 35%	+0.2 70%	+67 20%	+136 4%	+24 45%	-0.09 100%	+88 15%	+0.11 55%

- Homozygous Polled and PA free
- With the reintroduction of Charolais females to the Hokie Harvest Sale, we wanted to consign the best. Vanna 826F is a **Sterling Dam of Distinction** with impeccable phenotype and performance.
- This impressive Fargo daughter is a product of our ET program and ranks among the elite 4% of the breed in YW, 5% for TSI, 7% for CW, and 15% for both REA and MCE.
- 826F is a true power cow with individual ratios of 100 for every recordable trait and 4 outstanding progeny in production.
- Lot 11A: Heifer calf born 9/18/2024, sired by RENN Performer 202K, tattoo 436M.

12 VPI MISS FALLS 020H

Birth Date: 09/01/2020 Cow F1306682 Tattoo: 020H

Purebred
Charolais

WR WRANGLER W601
WR FOREMAN D602
M883344 WR DUCHESS B612
ACA
WCR SIR DUKE 7340 P
VPI MISS FALLS 825F
F1272744 VPI MISS FALLS 628D

CMF 192 WRANGLER 256
WR MISS PRINCESS T629
LT LEDGER 0332 P
WR DUCHESS Y601
WCR OZ SIR DUKE 1155 PET
WCR MISS TRADITION 6240P
M6/RC FRESH AIR 1138 PLD
JMAR VPI MISS FALLS 1J31
EPDS

\$ INDEX
TSI +252.50

CED	BW EPD	WW EPD	YW EPD	Milk	MARB	REA	BF
+17.9 3%	-3.7 9%	+61 40%	+110 40%	+24 50%	+0.16 35%	+50 85%	+0.36 95%

- Homozygous Polled and PA free
- 020H is an outstanding Foreman daughter that has demonstrated her generational lineages of carcass performance on ultrasound day with superior ratios for RUMP@133, RIB@118, and REA@111.
- This female's elegance and power give her the ability to generate high-end herd sires that offer customers calving-ease matched with tremendous growth and performance.
- Lot 12A: Bull calf born 9/18/2024, sired by VPI Graduate 917G, tattoo 435M.



VPI TIARA 029H Lot 13

Fall Calvers

13

VPI TIARA 029H

Birth Date: 10/01/2020 Cow F1306581 Tattoo: 029H

Purebred
Charolais

LT LEDGER 0332 P
ACE-ORR LOCK N LOAD 243P
M836295

ORR'S MS PETUNIA 941P



M6/RC FRESH AIR 1138 PLD

VPI TIARA 622D

F1241186 VPI TIARA 327A

LT BLUEGRASS 4017 P

LT BRENDA 6120 PLD

ACE-ORR MAKERS MARK 689

ORR'S MS PETUNIA 0054 ET

M6 FRESH AIR 8165 P ET

M6 MS 761 NANCY 6100 P ET

VPI FREE LUNCH 708T

VPI TIARA 844U ET

EPDS

\$ INDEX

TSI **+266.18**

CED	BW EPD	VW EPD	YW EPD	Milk	MARB	REA	BF
+18.6 2%	-4.1 7%	+63 35%	+119 20%	+28 25%	+0.21 20%	+49 90%	+0.10 55%

- Homozygous Polled and PA free
- 029H ranks with the elite 1% and 2% for MCE and CED, respectively. She is also in the top 15% for TSI, giving her a total measure of 11 key traits in the top 20% of the entire Charolais registry.
- Her dam was a high selling lot that was purchased by Uwharrie Ridge Farms, Ashboro, NC in the 2022 Leading Ladies in Hokie Nation Online Sale.
- The Tiara females have certainly been maternal matriarchs in the VT herd.
- This direct daughter of Lock N Load is in the apex of production and poised to produce females that will accelerate any program with longevity, performance, and direction.
- Due to calve 10/11/2024 to RENN Performer 202K.



ACE-ORR Lock N Load 243P

Sire of Lot 13

FC 61 TL SERIES | Side-Pull Mower Conditioners

9'2" - 11'6" working widths

Farmland Equipment
3612 Radford Rd
Christiansburg, VA 24073
www.farmlandequip.com
(540) 639-9685
Selling Farm Machines Since 1979!



FAST MOWING, FAST DRYDOWN



Standard drawbar or 2-point
Gyrodine® swivel hitch for tight turns



Lubed-for-life Optidisc® Elite cutterbar
and Fast-Fit® blades



Finger, rubber roller or steel roller
conditioning—adjustable for any crop



Broadest range of windrow width
settings in the industry

Invest in Quality®
www.kuhn.com



Visit our website to locate a dealer near you!



OCTOBER 25, 2024 at 6:30 p.m. EDT



Angus Females

14

VPI SHADOE 1J23

Birth Date: 09/21/21

Cow *20265253

Tattoo: 1J23



Angus

SILVEIRAS CONVERSION 8064
BUBS SOUTHERN CHARM AA31
17853196 HICKORY HILL ERICA 009
PVF INSIGHT 0129
VPI SHADOE 8F23
19214166 VPI SHADOE 4B17

BT CROSSOVER 758N
EXG SARAS DREAM S609 R3
CONNEALY STIMULUS 8419
HICKORY HILL ERICATA32
S A V BRILLIANCE 8077
PVF MISSIE 790
V A R RESERVE 1111
VPI SHADOE 2Z24
EPDS

\$ INDEXES			
\$M	+68	30%	
\$W	+58	45%	
\$F	+112	10%	
\$G	+59	25%	
\$B	+171	15%	
\$C	+290	10%	

CED	BW EPD	WW EPD	YW EPD	Milk	Marb	RE	FAT
+9 25%	+0.6 35%	+59 50%	+109 45%	+27 45%	+0.67 35%	+0.99 10%	+0.001 35%

- BUBS Southern Charm is one of the most widely used sires over the last half decade. Shadoe 1J23 is one of our most elite from that sire group as she possesses the phenotype and robustness that denotes her prolific sire.
- This female records more than half of the documented \$Values in the top 15% of the Angus breed and graces the upper 10% for RE.
- Her genetic power aids her to be a versatile bull or female producer that can upgrade your program.
- Lot 14A: Heifer calf born 9/21/2024, sired by HCPA Veracious, tattoo 4M25.

15

VPI PRIMROSE 1J24

Birth Date: 09/21/21

Cow *20265254

Tattoo: 1J24



Angus

MUSGRAVE AVIATOR
4M ACE 709
19014756 KGM ENCHANTRESS 4054
PVF INSIGHT 0129
VPI PRIMROSE 8F25
19214168 ANKONY PRIMROSE 3000

KOUPALS B&B IDENTITY
MCATL FOREVER LADY 1429-138
S A V BISMARCK 5682
LAZY JB ENCHANTRESS 275
S A V BRILLIANCE 8077
PVF MISSIE 790
CONNEALY EARNAN 076E
ANKONY MISS PRIMROSE Y007
EPDS

\$ INDEXES			
\$M	+38	95%	
\$W	+59	40%	
\$F	+131	1%	
\$G	+43	55%	
\$B	+174	10%	
\$C	+264	25%	

CED	BW EPD	WW EPD	YW EPD	Milk	Marb	RE	FAT
+2 80%	+4 95%	+86 2%	+153 2%	+18 95%	+0.29 80%	+1.15 3%	-0.012 20%

- Primrose 1J24 is a true genetic outlier with 11 traits in the top 5% of the entire Angus genetic database.
- She records \$F in the elite 1%, both WW and YW in the upper 2%, and \$B in the top 10%.
- The Virginia Tech program and The Hokie Harvest event have embodied the rationale that quality trumps quantity.
- This 4M Ace female is hard to part with as she harnesses so much breeding versatility and quality.
- We have brought the best for you this year and highly encourage serious breeders to look in on sale day.
- Lot 15A: Heifer calf born 8/30/2024, sired by Virginia Tech Statesman, tattoo 4M16.

16

VPI 2Z18 RITA 1J20

Birth Date: 09/06/21

Cow *20265416

Tattoo: 1J20



Angus

A A R TEN X 7008 S A
V A R DISCOVERY 2240
17262835 DEER VALLEY RITA 0308
G A R PROPHET
VPI 7T39 RITA 2Z18
17338644 VPI RITA 317 7T39 ET

MYTTY IN FOCUS
A A R LADY KELTON 5551
SITZ UPWARD 307R
G A R OBJECTIVE 2345
C R A BEXTOR 872 5205 608
G A R OBJECTIVE 1885
G A R PREDESTINED
HHF ALLI RITA 704 317
EPDS

\$ INDEXES			
\$M	+46	85%	
\$W	+63	30%	
\$F	+92	40%	
\$G	+67	15%	
\$B	+159	20%	
\$C	+252	35%	

CED	BW EPD	WW EPD	YW EPD	Milk	Marb	RE	FAT
+10 20%	+0.5 30%	+71 20%	+132 15%	+25 60%	+1.12 10%	+0.24 90%	+0.056 95%

- 1J20 is a direct descendant of VAR Discovery and is a truly unique individual that records seven traits in the top 15% of the Angus breed.
- She is an elegant female that is highly sound and robust centered and stems from a highly productive Rita tribe.
- Her 2023 heifer calf ratioed 96 and 105 for BW and WW, respectively.
- This female has excelled in Neogen's database ranking in the upper 5% for Tenderness and top 7% of nearly 1.6 million animals for DOC.
- Lot 16A: Heifer calf born 8/31/2024, sired by Quaker Hill Black Bandolier 1C25, tattoo 4M17.

17

VPI MISS ADVANCE 1J2

Birth Date: 01/15/21

Cow *20085207

Tattoo: 1J2



Angus

S S NIAGARA Z29
TEHAMA PATRIARCH F028
18981191 TEHAMA ELITE BLACKBIRD D826
DEER VALLEY UNIQUE 5635
VPI MISS ADVANCE 9G3
19466221 VPI MISS ADVANCE 6D35

HOOVER DAM
JETS S X144
CONNEALY THUNDER
TEHAMA ELITE BLACKBIRD Z630
PLATTEMERE WEIGH UP K360
SITZ HENRIETTA PRIDE 643T
K C F BENNETT FORTRESS
VPI MISS ADVANCE 4B21
EPDS

\$ INDEXES			
\$M	+82	10%	
\$W	+83	2%	
\$F	+108	15%	
\$G	+55	30%	
\$B	+163	20%	
\$C	+293	10%	

CED	BW EPD	WW EPD	YW EPD	Milk	Marb	RE	FAT
+7 40%	+0 20%	+76 10%	+135 10%	+33 15%	+0.68 35%	+0.83 20%	+0.031 75%

- Elite! This Tehama Patriarch female ranks in the impressive upper 2% of the Angus breed for \$W, as well as recording five key traits for growth and carcass merit in the top 10% of registered active dams.
- 1J2 is a moderately framed three-year-old with fleshing ability and is geared for forage conversion.
- Her broodiness and durable build will aid to her longevity within your program.
- Lot 17A: Bull calf born 9/7/2024, sired by Virginia Tech Statesman, tattoo 4M24.



Hokie Harvest Cartoon



VT Meat Center



Old Barn at Smithfield

VPI SAVANNAH H085 ET

Lot 18



VPI SAVANNAH G995 ET

Lot 19



18 VPI SAVANNAH H085 ET

Birth Date: 9/5/20

Cow 3915718

Tattoo: H085

Simmental

1/2 SM 1/2 AN

MUSGRAVE BIG SKY
MUSGRAVE SKY HIGH 1535

3151091

FLAG QUEEN W 00649



MCM TOP GRADE 018X

VPI SHESAVANNAH B463 ET

2868502

EBS SHESA ANDRIAS DREAM

CONNEALY EARNAN 076E
SAV PRIMROSE 7861
SAV 004 DENSITY 4336
PLATTEMERE QUEEN W 660

MR NLC UPGRADE U8676
MCM 513R
CNS DREAM ON L186
TRIPLEC SHESAVANNAH K137

EPDS

\$ INDEXES

API +141.6
TI +80.9

CED	BW EPD	VWV EPD	YW EPD	Milk	MARB	REA	BF
+15.9 20%	+1.6 80%	+81.1 30%	+128.6 30%	+22 70%	+0.35 55%	+0.55 75%	+0.015 99%

- Homozygous Black and Homozygous Polled
- H085 has individual ultrasound ratios off the charts for IMF, B Fat, and REA, as well as recording multiple traits in the top 20% of the breed.
- Her Angus sire, Musgrave Sky High, was the leadoff and high-selling bull at the 2016 Musgrave Bull Sale.
- H085 is a proven half-blood matron with a WWR of 102 and has significant versatility within any production setting.
- Her Clear Advantage son sells as Lot 40 and is one of the highlights in our Simmental bull division since he garners her performance and power.
- Lot 18A: Heifer calf born 9/01/2024, sired by Schooley Krown 29K, tattoo M468.

19 VPI SAVANNAH G995 ET

Birth Date: 10/10/19

Cow 3687733

Tattoo: G995

Simmental

PB SM

LLSF UPRISING Z925
HILB ORACLE C033R

2993610

SS BABYS BREATH P035



SANDEEN UPPER CLASS 2386

VPI SAVANNAH C573 ET

2991655

EBS SHESA ANDRIAS DREAM

HEADS UP 20X ET
LLSF UNTOUCHABLE U925
SS GOLDMINE L42
SVF BREATH TAKER J130

MR NLC UPGRADE U8676
SANDEEN DONNA 7386
CNS DREAM ON L186
TRIPLEC SHESAVANNAH K137

EPDS

\$ INDEXES

API +116.1
TI +74.1

CED	BW EPD	VWV EPD	YW EPD	Milk	MARB	REA	BF
+12.9 30%	-0.9 15%	+70.4 80%	+94.9 95%	+17.1 95%	+0.03 85%	+0.86 55%	-.112 2%

- Homozygous Black and Homozygous Polled
- This impressive ET purebred female has garnered numerous accolades in production recording one of the highest ratioing bulls in the 2022 birth year.
- Her great maternal granddam was the cornerstone in our ET program.
- G995 maintains an impressive ranking for multiple carcass traits highlighted by scoring in the elite 2% of the breed for B FAT and upper 5% for YG, as well as positioning herself in the top 3% for DOC.
- Due to calve 10/24/2024 to Virginia Tech Legend K285 ET (Grand Champion Percent-age Bull at WV and Appalachian State Fairs).



Fall Calving Cows



VPI SAVANNAH H074

Lot 20

SIMMENTAL FALL CALVERS

20 VPI SAVANNAH H074

Birth Date: 2/26/20

Cow 3740495

Tattoo: H074

Simmental
PB SM

SFG COWBOY LOGIC D627

3208956

CCR COWBOY CUT 5048Z

SFG QUEEN B01



CCR SPARTAN 9124A

VPI SAVANNAH E759

3253598

VPI SHESAVANNAH A389

TRIPLE C SINGLETARY S3H

CCR MS 4045 TIME 7322T

MCM TOP GRADE 018X

SFG QUEEN Z11

CCR CATALYST 7035W

CCR MS APPLE 9332W

TNTAXIS X307

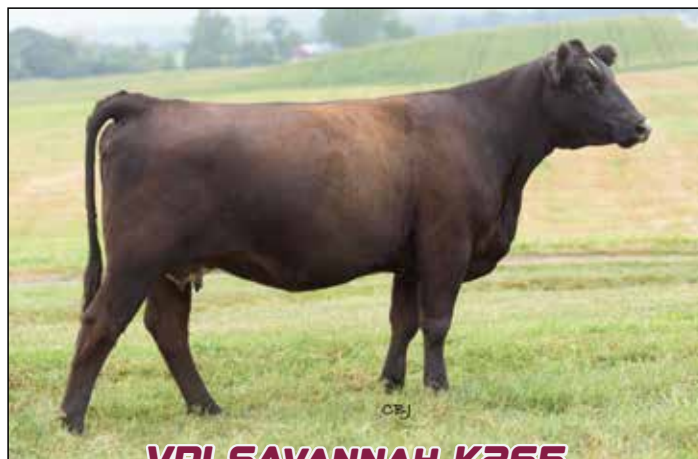
VPI SHESAVANNAH Y168

\$ INDEXES

API	+150.6
TI	+88.3

CED	BW EPD	WW EPD	YW EPD	Milk	MARB	REA	BF
+15 15%	-1.8 10%	+80.3 40%	+121 40%	+18 90%	+0.35 25%	+0.31 99%	-.037 99%

- Black and Homozygous Polled
- H074 is an outstanding purebred individual that records both performance indexes in the top 25% of the Simmental breed.
- Her accolades are highlighted by four key traits (CED, BW, MCE, DOC) in the upper 15% of the female population.
- This Cowboy Logic female has a WWR 2/109 and is loaded with documented performance in two high-ratioing offspring which features her Copacetic son as Lot 38.
- She is bold and massive that can add true power and extreme performance.
- Lot 20A: Bull calf born 9/2/2024, sired by Schooley Krown 28K, tattoo M470.



VPI SAVANNAH K265

This Acclaim daughter of H074 sells as Lot 9

Online Bidding available at **WWW.SALERING.LIVE**



VPI SAVANNAH J175

Lot 21

21

VPI SAVANNAH J175

Birth Date: 9/4/21 Cow 4006949 Tattoo: J175 1/2 SM 1/2 AN

SimAngus™

TJ FROSTY 318E

3288449 TJ 58B



ACW IRONHIDE 395Y

TJ 58B

3288449

TJ 58B

BUBS SOUTHERN CHARM AA31

VPI SAVANNAH G993

3687732 VPI SHESAVANNAH B467 ET

REMINGTON LOCK N LOAD54U

DKF MISS NEW DEAL 205P

323Z

TJ 44Y

SILVEIRAS CONVERSION 8064

HICKORY HILL ERICA 009

MCM TOP GRADE 018X

EBS SHESA ANDRIAS DREAM

\$ INDEXES

API +133.2

TI +85.0

CED	BW EPD	WW EPD	YW EPD	Milk	MARB	REA	BF
+9.9 85%	-0.7 35%	+88.2 15%	+136.9 15%	+27.9 20%	+0.23 75%	+0.65 60%	-0.024 70%

- Homozygous Black and Homozygous Polled
- J175 is a versatile half-blood with amazing individual performance ratios for both growth and carcass.
- The Savannah cow family is a well-known commodity in the VT Simmental program.
- This Frosty three-year-old posted a WWR of 103 on her first calf last year.
- She possesses a solid genomic profile and is a phenotypic standout for soundness and extension.
- Lot 21A: Bull calf born 9/22/2024, sired by Schooley Krown 28K, tattoo M479.

22

VPI SAVANNAH J185

Birth Date: 10/2/21 Cow 4091467 Tattoo: J185 1/4 SM 3/4 AN

SimAngus™

VPI ACCLAIM 8F34 ET

4054144 VPI SHADOE 1Y28



JINDRA ACCLAIM

VPI SHADOE 1Y28

4054144

VPI SHADOE 1Y28

PVF INSIGHT 0129

VPI SAVANNAH G960

3588570 VPI SHESAVANNAH B463 ET

JINDRA 3RD DIMENSION

JINDRA BLACKBIRD LASSY 1111

S AV BISMARCK 5682

SHADOE 1062 OF FOXCROSS

S AV BRILLIANCE 8077

PVF MISSIE 790

MCM TOP GRADE 018X

EBS SHESA ANDRIAS DREAM

\$ INDEXES

API +140.1

TI +77.5

CED	BW EPD	WW EPD	YW EPD	Milk	MARB	REA	BF
+15.7 20%	-2.1 20%	+63.2 90%	+102.7 80%	+26.1 35%	+0.52 30%	+0.69 50%	-0.002 90%

- Black and Homozygous Polled
- This high-performing, quarter-blood matron lands four key traits (CED, BW, MCE, and YG) in the top 20% of the Simmental breed.
- She traces back to our original donor cow, EBS Shesa Andrias Dream, who was a prolific and productive donor cow.
- Her additional heterosis and functionality have contributed to her overall success within our program.
- Lot 22A: Heifer calf born 9/20/2024, sired by Schooley Krown 28K, tattoo M476.

23

VPI RACHELS BLAZE G902

Birth Date: 01/25/2019 Cow P44042391 Tattoo: G902 Polled Hereford



VPI RACHELS BLAZE G902

Lot 23

CRR 109 CATAPULT 322

P4338485 CRR 713 KELLY 0117



CRR 719 CATAPULT 109

CRR 4037 ECLIPSE 808

CRR 63J KODIAK 713

CRR 9B KELLY 521

CHURCHILL RED BULL 200Z

VPI RACHELS BLAZE C503

43659366 VPI RACHELS BLAZE Z207

TH 122 711 VICTOR 719T

CRR 4037 ECLIPSE 808

CRR 63J KODIAK 713

CRR 9B KELLY 521

CHURCHILL SENSATION 028X

CHURCHILL LADY 002X ET

MSUTCF REVOLUTION 4R

DR RACHEL'S BLAZE 29FT20 ET

\$ INDEXES

BMI\$ +391

BII\$ +454

CHB\$ +113

CED	BW EPD	WW EPD	YW EPD	MM	MARB	REA	FAT
+3.1 52%	+1.7 27%	+51 72%	+86 61%	+27 47%	+0.04 75%	+0.73 9%	+0.002 16%

- Heterozygous Polled
- This impressive Catapult female has a solidified progeny tabulation by recording a WWR of 3/102.
- Her individual stats are powerful as well by ranking in the top 9% of the entire Hereford breed for REA.
- G902 has a lineage that denotes phenotypic and genomic strength with some of the most popular and high-performing sires throughout the last decade.
- This matron is built for streamlined performance with a superior udder quality and teat design that will aid in her longevity.
- Her Houston son from last year sells as lot 45 in the bull offering.
- Lot 23A: Bull calf born 9/18/2024, sired by SHF Houston D287 H086, tattoo M405.



The Bulls

CHAROLAIS BULLS



24 VT REDEMPTION 327L

Birth Date: 09/06/2023 Bull M988010 Tattoo: 327L

Purebred
Charolais

CCC WC RESOURCE 417 P
CCC WC REDEMPTION 7143 PLD ET
EM893465 WC ROLLS ROYCE 3177 P ET



VPI FREE LUNCH 708T
VPI MISS FINE JUDY 209Z
F1151626 VPI MISS FINE JUDY 838U

LT RUSHMORE 8060 PLD
WC CCC BLUE GIRL 1528 P
TR PZC RAPID FIRE 9775 ET
WCCC MISS ALLIANCE 428
LT RIO BLANCO 1234 P
VPI MISS DUCHESS 404 P
SR/NC FIELD REP 2158 P ET
SSF MISS FINE JUDY 2241

\$ INDEX
TSI **+239.49**

CED	BW EPD	WW EPD	YW EPD	Milk	MARB	REA	BF
+12.0 45%	-1.6 40%	+72 15%	+107 65%	+22 70%	+0.14 45%	+4.7 95%	+0.050 100%
PERFORMANCE DATA				SCAN DATA			
Act BW	Adj WW	Adj YW	Scrotal	FS	IMF	REA	FAT
92	694	1195	40.47	5.9	2.60	14.53	0.17

- Power Bull with Calving-Ease
- Homozygous Polled and PA Free
- Incredible shape and dimension best describe this Redemption son. He is easy fleshing and offers extreme performance with ratios for WW and WPDA @ 111.
- 327L has been an outlier since birth.
- We have truly challenged our program to new heights in terms of phenotype and genomics since this individual has been exceptional and is worthy of wearing a show halter.

25 VT ATLAS 317L

Birth Date: 09/02/2023 Bull M988006 Tattoo: 317L

Purebred
Charolais

LT PATRIOT 4004 PLD
LT ATLAS 0251 PLD
M943509 LT MOLLY 7031 PLD



RBM FARGO Y111
VPI VANNA 826F
EF1272724 VPI VANNA 630S P ET

LT LEDGER 0332 P
LK MISS RIO 2119
LT RUSHMORE 8060 PLD
LT MOLLY 5339 PLD
SPARROWS FARGO 811U
HC RHINESTONE 5100
EATONS LEADER 2233 P
THREE TREES VANNA 1981 ET

\$ INDEX
TSI **+283.13**

CED	BW EPD	WW EPD	YW EPD	Milk	MARB	REA	BF
+16.9 7%	-3.9 15%	+68 30%	+137 8%	+30 20%	+0.04 85%	+1.02 5%	+0.031 85%
PERFORMANCE DATA				SCAN DATA			
Act BW	Adj WW	Adj YW	Scrotal	FS	IMF	REA	FAT
76	644	1186	41.00	5.9	2.74	14.17	0.18

- Carcass Bull with Calving-Ease
- Homozygous Polled and PA free
- This direct son of Atlas is sure to rank high on any selection criteria.
- He is loaded with muscle and ranks in the top 5% of the breed for REA, upper 7% for TSI and CED, and Upper 8% for YW.
- His fall-calving dam sells as lot 11.

Charolais Bulls



VT INFERNO 329L Lot 26

28 VT JEFFERSON 331L

Birth Date: 09/21/2023 Bull M992997 Tattoo: 331L

Purebred
Charolais

FTJ MONTICELLO 1806
JMAR JEFFERSON 8M11
M951993 DCR MS SILVER LED F136



WR FOREMAN D602

VPI VANNA 919G

F1285593 VPI VANNA 630S P ET

VPI FREE LUNCH 708T
FTJ LTRB905 LTBV SHANDY1527
WCF MR SILVER GUN 467
DCR MS LEDGER C43
WR WRANGLER W601
WR DUCHESS B612
EATONS LEADER 2233 P
THREE TREES VANNA 1981ET

\$ INDEX
TSI +293.30

CED	BW EPD	WW EPD	YW EPD	Milk	MARB	REA	BF
+12.9 35%	-0.3 70%	+82 4%	+153 2%	+13 100%	+0.20 25%	+77 35%	+0.021 65%
PERFORMANCE DATA				SCAN DATA			
Act BW	Adj WW	Adj YW	Scrotal	FS	IMF	REA	FAT
92	569	1039	39.02	6.5	1.65	12.34	0.10

- Growth and Carcass Bull
- Homozygous Polled and PA free
- This impressive Jefferson son has streamlined statistics with 11 of 15 measurable traits above average.
- Highlights include an elite ranking of 2% for YW, upper 3% for TSI, and top 4% WW and CW.

26 VT INFERNO 329L

Birth Date: 09/19/2023 Bull M988011 Tattoo: 329L

Purebred
Charolais

LT RUSHMORE 8060 PLD
WC INFERNO 6561 P
M897949 WCASTA 0505 P



LT AFFINITY 6221 PLD
VPI MISS CAMEO 025H

F1308778 VPI MISS CAMEO GIRL 821F

LT RIO BRAVO 3181 P
LT BRENDA'S EASE 3055PLD
LT BLUE VALUE 7903 ET
WC ASTA 8210
LT RUSHMORE 8060 PLD
LT ATHENA 1247
LT BLUE VALUE 7903 ET
VPI CAMEO GIRL 631D

\$ INDEX
TSI +290.14

CED	BW EPD	WW EPD	YW EPD	Milk	MARB	REA	BF
+12.5 40%	-1.3 50%	+82 3%	+145 4%	+37 2%	+0.52 1%	+59 80%	+0.026 75%
PERFORMANCE DATA				SCAN DATA			
Act BW	Adj WW	Adj YW	Scrotal	FS	IMF	REA	FAT
80	742	1259	38.55	6.9	3.16	11.51	0.25

- Growth and Carcass Bull
- Homozygous Polled and PA free
- This exciting Inferno son stems from one of our most celebrated females and is a half-brother to one of our high-selling 2023 bulls that was selected by Quaker Hill Farms, Louisa, VA.
- Individually 329L posted a WWR of 118 and ranks in the elite 1% of the entire breed for MARB and MTL and upper 2% and 3% for MILK and TSI, respectively.
- Overall, he measures in the top 6% of the breed for seven key indicators.

27 VT ATLAS 332L

Birth Date: 10/13/2023 Bull M988012 Tattoo: 332L

Purebred
Charolais

LT PATRIOT 4004 PLD
LT ATLAS 0251 PLD
M943509 LT MOLLY 7031 PLD



VPI/NC HOKIE EXPRESS 314A
VPI TIARA 523C
F1213843 VPI TIARA 844U ET

LT LEDGER 0332 P
LK MISS RIO 2119
LT RUSHMORE 8060 PLD
LT MOLLY 5339 PLD
LT LEDGER 0332 P
HVPI MISS DUCHESS 724T ET
OAKDALE DUKE 9003P
JWK TIARA H116

\$ INDEX
TSI +287.72

CED	BW EPD	WW EPD	YW EPD	Milk	MARB	REA	BF
+15.0 20%	-2.0 35%	+83 3%	+148 3%	+36 3%	+0.14 45%	+1.11 2%	+0.025 75%
PERFORMANCE DATA				SCAN DATA			
Act BW	Adj WW	Adj YW	Scrotal	FS	IMF	REA	FAT
90	654	1160	39.00	7.2	2.25	13.15	0.17

- Growth and Power Bull
- Heterozygous Polled and PA free
- Genomically, 332L is a curve-bending young sire with 7 traits ranking at or above the upper 5% of the breed, highlighted by an elite 1% ranking for MTL and upper 3% ranking for WW, YW, and MILK.
- Here is an ultra-complete bull with power and muscle that is fused with angularity and soundness.
- This Atlas son will upgrade your program and enhance your performance indicators both on paper and within your pasture.

29 VT JUBAL 318L

Birth Date: 09/02/2023 Bull M988007 Tattoo: 318L

Purebred
Charolais

PLEASANT DAWN CHISUM 216A
JMAR JUBAL 5P01
M953191 JMAR MS AMERICA 1V08



VPI FREE LUNCH 708T
VPI TIARA 327A

F1171267 VPI TIARA 844U ET

EATONS BIG BUD 10402 POLLED
PLEASANT DAWN MAGGIE 316X
VPI FREE LUNCH 708T
LCOC MS AMERICA CP046
LT RIO BLANCO 1234 P
VPI MISS DUCHESS 404 P
OAKDALE DUKE 9003P
JWK TIARA H116

\$ INDEX
TSI +288.83

CED	BW EPD	WW EPD	YW EPD	Milk	MARB	REA	BF
+18.5 3%	-6.5 2%	+65 40%	+136 9%	+18 90%	+0.37 3%	+38 100%	+0.044 95%
PERFORMANCE DATA				SCAN DATA			
Act BW	Adj WW	Adj YW	Scrotal	FS	IMF	REA	FAT
65	547	920	38.67	5.4	2.22	10.97	0.16

- Heifer Bull
- Homozygous Polled and PA free
- Here is a unique Jubal son at the extreme height of the breed for CE, BW, and MARB.
- His actual birth weight of 65# allows him to check the box as a heifer-safe sire.
- As an individual, he measures among the elite 1% for SC and top 4% for TSI.

30 VT AFFINTY 322L

Birth Date: 9/04/2023 Bull EM988013 Tattoo: 322L

Purebred
Charolais

LT RUSHMORE 8060 PLD
LT AFFINITY 6221 PLD
M880381 LT ATHENA 1247



LT LEDGER 0332 P
VPI MISS DUCHESS 407B
F1185190 VPI MISS DUCHESS 724T ET

LT RIO BRAVO 3181 P
LT BRENDA'S EASE 3055PLD
WINN MANS LANZA 610S
LT SILVER ATHENA 7123 P
LT BLUEGRASS 4017 P
LT BRENDA 6120 PLD
M6 GRID MAKER 104 PET
VCR MISS DUCHESS 703 PLD

\$ INDEX
TSI +246.59

CED	BW EPD	WW EPD	YW EPD	Milk	MARB	REA	BF
+14.3 25%	-3.5 15%	+59 65%	+99 80%	+30 20%	+0.25 15%	+88 20%	+0.034 90%
PERFORMANCE DATA				SCAN DATA			
Act BW	Adj WW	Adj YW	Scrotal	FS	IMF	REA	FAT
65	471	863	32.75	4.4	1.47	12.60	0.15

- Heifer Bull
- Heterozygous Polled and PA free
- This Affinity son traces back to our foundation donor, Duchess 703, that produced productive females and highly sought-after sons.
- 322L is a moderately-framed bull with fleshing ease and ranks among the top 15% of the breed for BW and MARB.



Top 1% WW EPD,
YW EPD, \$W & \$F

VT STATESMAN 3L6

Lot 31

Top 1% WN EPD, YW EPD & \$F



VT LAWMAKER 3L6 ET

Lot 32

Flushmates

STATESMAN X 9G41

Lot 32 & 33



Virginia Tech Statesman

Sire of Lots 31, 32 & 33

*Owned by Deer Valley Farm, TN & Knoll Crest Farms Inc., VA
Semen Available through Select Sires*

Angus Bulls

Top 1% YW EPD & \$W



VT LEGISLATOR 3L7 ET

Lot 33

LOTS 31, 32 & 33 ARE FULL BROTHERS

31

VT STATESMAN 3L6

Birth Date: 09/01/2023 Bull *20741486

Tattoo: 3L6



EPDS									
CED	BW EPD	WW EPD	YW EPD	Milk	Marb	RE	FAT		
+4 70%	+1.9 65%	+105 1%	+188 1%	+27 40%	+93 30%	+77 40%	+090 95%		
PERFORMANCE DATA					SCAN DATA				
Act BW	Adj WW	Adj YW	Scrotal	FS	IMF	REA	FAT		
84	725	1205	37.0	6.0	3.82	12.4	0.33		

\$ INDEXES

\$M	\$W	\$F	\$G	\$B	\$C
+67 45%	+102 1%	+154 1%	+62 30%	+217 3%	+349 2%

32

VT LAWMAKER 3L6 ET

Birth Date: 04/26/2023 Bull +*20662072

Tattoo: 3L6



EPDS									
CED	BW EPD	WW EPD	YW EPD	Milk	Marb	RE	FAT		
+5 60%	+2.7 80%	+111 1%	+197 1%	+21 85%	+68 55%	+1.31 2%	+003 35%		
PERFORMANCE DATA					SCAN DATA				
Act BW	Adj WW	Adj YW	Scrotal	FS	IMF	REA	FAT		
73	722	1076	37.0	5.9	n/a	n/a	n/a		

\$ INDEXES

\$M	\$W	\$F	\$G	\$B	\$C
+48 90%	+86 3%	+140 1%	+63 30%	+202 10%	+310 15%

33

VT LEGISLATOR 3L7 ET

Birth Date: 04/28/2023 Bull +*20662073

Tattoo: 3L7



TEHAMA PATRIARCH F028
VIRGINIA TECH STATESMAN
20085208 VPI 310A RITA 9G6 ET

DEER VALLEY GROWTH FUND
VPI SHADOE 9G41 ET
19673420 VPI SHADOE 1Y28

S S NIAGARA Z29
TEHAMA ELITE BLACKBIRD D826
ELLINGSON HOMESTEAD 6030
AED RITA 310A
BASIN PAYWEIGHT 1682
DEER VALLEY RITA 36113
S AV BISMARCK 5682
SHADOE 1062 OF FOXCROSS

\$ INDEXES		
\$M	+84	10%
\$W	+95	1%
\$F	+136	2%
\$G	+64	30%
\$B	+200	10%
\$C	+343	3%

CED	BW EPD	WW EPD	YW EPD	Milk	Marb	RE	FAT
+11 15%	+4 35%	+95 2%	+174 1%	+33 15%	+97 25%	+82 35%	+098 95%
PERFORMANCE DATA					SCAN DATA		
Act BW	Adj WW	Adj YW	Scrotal	FS	IMF	REA	FAT
68	704	1003	38.0	6.0	n/a	n/a	n/a

- Power and Growth Bulls
- These three full brothers are definitely headliners of the Angus bull division and all have \$B values over 200.
- The two older Statesman sons are a product of our ET program.
- Each is unique in terms of build and is exceptional in terms of quality with respect to genomics, phenotype, and performance.
- Each of these individuals ranks among the elite 1% of the breed for multiple key indicators for production, maternal, management, carcass, and \$ indexes.
- Visually, these bulls will add growth, power, and structural stability to your program and all embody the quality that Virginia Tech has become noted for over the years.
- 15 Statesman-sired females just averaged an impressive \$21,833 in the Express Ranches "2024 Big Event Sale"!

34

VT REGIMENT 3L9

Birth Date: 09/03/2023 Bull *20741489

Tattoo: 3L9



WAR CAVALRY B063 Z044
WILKS REGIMENT 9035
19401188 VINTAGE CHLOE 6137

4M ACE 709
VPI PRIMROSE 1J24
20265254 VPI PRIMROSE 8F25

CONNELLY CAVALRY 1149
WAR CC&7 Z044 X029
VAR EMPIRE 3037
VAR CHLOE 2227
MUSGRAVE AVIATOR
KGM ENCHANTRESS 4054
PVF INSIGHT 0129
ANKONY PRIMROSE 3000

\$ INDEXES		
\$M	+51	85%
\$W	+72	25%
\$F	+132	2%
\$G	+49	60%
\$B	+181	20%
\$C	+286	25%

CED	BW EPD	WW EPD	YW EPD	Milk	Marb	RE	FAT
+5 60%	+3.0 85%	+91 3%	+173 1%	+24 70%	+52 70%	+86 30%	+020 55%
PERFORMANCE DATA					SCAN DATA		
Act BW	Adj WW	Adj YW	Scrotal	FS	IMF	REA	FAT
83	555	1085	38.0	6.0	2.70	10.7	0.28

- Growth bull
- This Regiment son has individual rankings for RADG and YW within the elite 1%, a \$F value in the upper 2%, and measures in the top 3% of the Angus breed for WW as well.
- 3L9 has ultimate versatility with a lineage that blends the breed's most recognized leaders for phenotype, genomics, and maternal.
- His fall-calving dam sells as lot 15.



VPI Shadoe 9G41 ET

Virginia Tech Donor Dam of Lots 31, 32 & 33



VIRGINIA TECH STOCKDALE L355

Lot 35



Rocking P Private Stock H010

Sire of Lots 35 & 36



VIRGINIA TECH ECLIPSE L368

Lot 36

35 VIRGINIA TECH STOCKDALE L355

Birth Date: 2/13/23 Bull 4198621 Tattoo: L355

Simmental
PB SM

WLE COPACETIC E02
ROCKING P PRIVATE STOCK H010
3775641 RP/MP BUILT TO LOVE A021

VPI SAVANNAH D666 ET
3123968 EBS SHESA ANDRIAS DREAM

HPF QUANTUM LEAP Z952
CMFM JOY 022B
RUBYS WIDE OPEN 909W
RP/MP BUILT TO LOVE 076W
REMINGTON LOCK N LOAD 54U
G C F MISS NEW LEVEL R206
CNS DREAM ON L186
TRIPLE C SHESA VANNAH K137
EPDS

\$ INDEXES
API +134.6
TI +83.7

CED	BW EPD	WW EPD	YW EPD	Milk	MARB	REA	BF
+11.2 55%	+1 45%	+80.8 40%	+117.3 50%	+18.8 85%	+0.28 30%	+0.87 50%	-.057 85%

PERFORMANCE DATA				SCAN DATA			
Act BW	Adj WW	Adj YW	Scrotal	FS	IMF	REA	FAT
89	717	1210	38.0	6.0	n/a	n/a	n/a

- Power Bull
- Black and Homozygous Polled
- L355 is a unique purebred creature, sired by Rocking P Private Stock, that we choose to lead our Simmental program in the show ring.
- He checks all the boxes for balance and eye appeal and has been celebrated by every visual evaluation that he has received in his campaign.
- This young sire offers the functionality such as smooth and flexible joints, true power and shape, and a build that is soft and lends to fleshing-ease that is sought-after in the Simmental breed.
- Posts an individual adjusted WW of 717# with a WWR of 107.

36 VIRGINIA TECH ECLIPSE L368

Birth Date: 9/2/23 Bull 4259709 Tattoo: L368

Simmental
PB SM

WLE COPACETIC E02
ROCKING P PRIVATE STOCK H010
3775641 RP/MP BUILT TO LOVE A021

VPI SAVANNAH F853
3428453 VPI SAVANNAH D666 ET

HPF QUANTUM LEAP Z952
CMFM JOY 022B
RUBYS WIDE OPEN 909W
RP/MP BUILT TO LOVE 076W
LRS ELEVATE 213B
HOOK'S YELLOWSTONE 97Y
LRS MS DUAL FOCUS 213Z
W/C LOCK DOWN 206Z
EBS SHESA ANDRIAS DREAM
EPDS

\$ INDEXES
API +150.9
TI +85.3

CED	BW EPD	WW EPD	YW EPD	Milk	MARB	REA	BF
+17.1 4%	-1.8 10%	+79 45%	+111.8 60%	+20.1 75%	+0.23 40%	+0.76 75%	-.037 99%

PERFORMANCE DATA				SCAN DATA			
Act BW	Adj WW	Adj YW	Scrotal	FS	IMF	REA	FAT
69	606	1058	38.0	5.6	2.75	14.06	0.30

- Heifer Bull
- Homozygous Black and Homozygous Polled
- An ultimate first-calf heifer bull that ranks in the top 4% of the entire breed for CED.
- He offers a huge actual spread from birth to weaning with actuals of BW @ 70#, WW @ 604#, and dominates his contemporaries with a WWR @ 109.
- L368 is a purebred standout phenotypically with unmatched eye appeal, power, and performance!

Simmental Bulls



VIRGINIA TECH LOVER BOY L379

Lot 37

37 VIRGINIA TECH LOVER BOY L379

Birth Date: 9/7/23 Bull 4259715 Tattoo: L379 Simmental PB SM

HTP/SVF DURACELL T52
THSF LOVER BOY B33
2983443 RP/MP RIGHT TO LOVE 015U

CDI INNOVATOR 325D
VPI SAVANNAH F893 ET
3537908 VPI SHESAVANNAH B467 ET

CNS DREAM ON L186
HTP SVF HONEYDEW
SVF/NJC BUILT RIGHT N48
PCC QUEENS VALENTINE R9
TJ MAIN EVENT 503B
CDI MS SHEAR FORCE 49U
MCM TOP GRADE 018X
EBS SHESA ANDRIAS DREAM
EPDS

\$ INDEXES

API +139.6
TI +87.7

CED	BW EPD	WW EPD	YW EPD	Milk	MARB	REA	BF
+9.1 80%	+1.3 50%	+88.8 15%	+125.1 35%	+30.3 10%	+0.25 35%	+0.72 85%	-.048 95%
PERFORMANCE DATA				SCAN DATA			
Act BW	Adj WW	Adj YW	Scrotal	FS	IMF	REA	FAT
93	593	963	39.0	5.4	2.53	11.24	0.22

- Growth Bull
- Heterozygous Black and Homozygous Polled
- This high ratioing son of the impressive Lover Boy has balanced traits, a huge rib shape, and offers true growth and performance.
- He is a well-balanced purebred that posts a WWR of 107 and is backed by one of the most notorious cow families in the VT Simmental program.

38 VIRGINIA TECH COPACETIC L370

Birth Date: 9/2/23 Bull 4259708 Tattoo: L370 Simmental PB SM

HPF QUANTUM LEAP Z952
WLE COPACETIC E02
3299037 CMFM JOY 02ZB

SFG COWBOY LOGIC D627
VPI SAVANNAH H074
3740495 VPI SAVANNAH E759

HTP/SVF DURACELL T52
RP/MP RIGHT TO LOVE 015U
CIRCLE M TEJAS
CMFM BRUSHES JOY 802Z
CCR COWBOY CUT 5048Z
SFG QUEEN B01
CCR SPARTAN 9124A
VPI SHESAVANNAH A389
EPDS

\$ INDEXES

API +132.1
TI +83.8

CED	BW EPD	WW EPD	YW EPD	Milk	MARB	REA	BF
+14.3 20%	+0.9 45%	+81.2 40%	+121.3 40%	+14.6 99%	+0.28 30%	+0.44 99%	-.052 85%
PERFORMANCE DATA				SCAN DATA			
Act BW	Adj WW	Adj YW	Scrotal	FS	IMF	REA	FAT
72	599	954	35.0	4.9	2.69	11.76	0.16

- Heifer Bull
- Homozygous Black and Homozygous Polled
- Here is a high-performing, ultra-sound structured son of the phenotypic legend WLE Copacetic.
- This purebred bull will add scale-crushing performance with sensible-sized birth weights.
- His fall-calving dam posts BWR and WWR of 2/97 and 2/108, respectively, and sells as Lot 20.

39 VIRGINIA TECH STAND OUT L385

Birth Date: 9/28/23 Bull 4259725 Tattoo: L385 Simmental PB SM

OMF EPIC E27
SCHOOLEY STANDOUT 27G
3585120 CLRS BEAUTY QUEEN 420 B

SFG CHAIRMAN F8315
VPI SAVANNAH J167
3915455 VPI SHESAVANNAH B463 ET

WS ALL-AROUND Z35
OMF TIME LESS B100
CCR COWBOY CUT 5048Z
TSN MISS 1407 P146
W/C EXECUTIVE ORDER 8543B
SFG QUEEN B01
MCM TOP GRADE 018X
EBS SHESA ANDRIAS DREAM
EPDS

\$ INDEXES

API +135.4
TI +73.8

CED	BW EPD	WW EPD	YW EPD	Milk	MARB	REA	BF
+13.4 25%	+1.7 60%	+77.1 55%	+108 70%	+19.5 80%	-0.01 90%	+0.75 80%	-.075 50%
PERFORMANCE DATA				SCAN DATA			
Act BW	Adj WW	Adj YW	Scrotal	FS	IMF	REA	FAT
92	522	915	33.0	5.2	2.83	10.77	0.11

- Heifer Bull
- Homozygous Black and Homozygous Polled
- L385 is one of the cleanest fronted and most extended purebred bulls in our sale offering.
- He ranks in the upper 2% of the breed for STAY and a top 15% ranking for MCE.
- His dam hails from the Savannah cow family and sells as Lot 6.

40 VIRGINIA TECH ADVANTAGE L373

Birth Date: 9/4/23 Bull 4259717 Tattoo: L373 3/4 SM 1/4 AN

LLSF VANTAGE POINT F398
CLRWR CLEAR ADVANTAGE H4G
3858588 WS MISS SUGAR C4

MUSGRAVE SKY HIGH 1535
VPI SAVANNAH H085 ET
3915718 VPI SHESAVANNAH B463 ET

CCR ANCHOR 9071B
HPF RITE 2 LUV 398D
CLRS GRADE-A 875 A
WS ANISE A71
MUSGRAVE BIG SKY
FLAG QUEEN W 00649
MCM TOP GRADE 018X
EBS SHESA ANDRIAS DREAM
EPDS

\$ INDEXES

API +135.4
TI +86.5

CED	BW EPD	WW EPD	YW EPD	Milk	MARB	REA	BF
+14.4 30%	+3 95%	+94.3 5%	+148.4 10%	+23.9 50%	+0.29 65%	+0.65 60%	-.025 70%
PERFORMANCE DATA				SCAN DATA			
Act BW	Adj WW	Adj YW	Scrotal	FS	IMF	REA	FAT
94	564	976	38.0	5.4	2.47	12.59	0.19

- Growth Bull
- Homozygous Black and Homozygous Polled
- L373 is a three-quarter son of Clear Advantage and is a well-balanced young sire with curve-bending growth numbers.
- He is a soft centered, powerfully muscled young sire that will surely be high on any commercial cattlemen's short list.
- His dam has a 368-day calving interval and sells as Lot 18.



Simmental Bulls

41 VIRGINIA TECH NEXT LEVEL L391

Birth Date: 10/21/23 Bull 4319716 Tattoo: L391 3/4 SM 1/4 AN

SimAngus™

NEXT LEVEL
3981484
KRJ DAKOTA OUTLAW G974
KRDL CAEDENCE C37
BUBS SOUTHERN CHARM AA31
VPI SAVANNAH G993
3687732
VPI SHESAVANNAH B467 ET

RUBYS TURNPIKE 771E
BRKC DAPHNE DY37
WLE BIG DEAL A617
KRDL FAE Y46
SILVEIRAS CONVERSION 8064
HICKORY HILL ERICA 009
MCM TOP GRADE 018X
EBS SHESA ANDRIAS DREAM

\$ INDEXES

API +122
TI +87

CED	BW EPD	WW EPD	YW EPD	Milk	MARB	REA	BF
+9.5 90%	+4 99%	+95.6 4%	+153.1 4%	+27.6 25%	+0.31 60%	+0.89 20%	-0.66 20%

PERFORMANCE DATA

Act BW	Adj WW	Adj YW	Scrotal	FS	IMF	REA	FAT
96	519	938	38.0	5.5	2.6	11.34	0.21

SCAN DATA

- Balanced-Trait Bull
- Homozygous Black and Homozygous Polled
- L391 is the three-quarter blood, genomic highlight of the Next Level full brothers in the offering.
- He measures in the top 15% of the entire Simmental breed for six key production and carcass indicators, highlighted by a top 4% ranking for WW and YW.
- His donor dam has average progeny ratios of 105, 103, 118, and 106 for WW, YW, IMF, and REA, respectively.

42 VIRGINIA TECH MOTO MOTO L371

Birth Date: 9/3/23 Bull 4259705 Tattoo: L371 1/2 SM 1/2 AN

SimAngus™

GCC MOTO MOTO 637G
4129544
GCC JUANADAS PENELOPE 633B
CCR ANCHOR 9071B
VPI STOP AND STARE H088 ET
3912767
HS STOP AND STARE U118L

DAMERON FIRST CLASS
DUFF W 373 DIXIEERICA 8137
DCC NEW LOOK 101
GCC JUANADAS PENELOPE 612X
CCR COWBOY CUT 5048Z
CCR MS BARB 2120Z
CNS DREAM ON L186
HHSF BLACK GLITTER

\$ INDEXES

API +138.8
TI +86

CED	BW EPD	WW EPD	YW EPD	Milk	MARB	REA	BF
+11.3 70%	+1.7 80%	+81.2 30%	+123.2 40%	+15.7 99%	+0.6 20%	+0.58 70%	-0.03 70%

PERFORMANCE DATA

Act BW	Adj WW	Adj YW	Scrotal	FS	IMF	REA	FAT
90	577	915	38.0	4.9	2.95	11.67	0.19

SCAN DATA

- Power/Balanced-Trait Bull
- Homozygous Black and Homozygous Polled
- Here is a moderately-framed, half-blood Moto Moto son with enhanced fleshing ability.
- L371 is sure to sire low input cattle that will thrive on a forage-based program.
- His ET dam posts individual ratios of 110, 130, and 106 for ultrasound IMF, BF, and REA, respectively.
- He ranks in the top 20% of the breed for MARB.

LOTS 43 & 44 ARE FLUSHMATES

43 VIRGINIA TECH VENTURE L382 ET

Birth Date: 9/13/23 Bull 4259721 Tattoo: L382

Simmental
PB SM

LKCC BOLD VENTURE 194F
3439419
MS CRYSTEEL VOLTAGE 194A
CDI INNOVATOR 325D
VPI SAVANNAH F884 ET
3537901
VPI SHESAVANNAH B467 ET

CNS DREAM ON L186
WS MARLA 276M
SS/PRS HIGH VOLTAGE 244X
BF MISS CRYSTEEL TANGO
TJ MAIN EVENT 503B
CDI MS SHEAR FORCE 49U
MCM TOP GRADE 018X
EBS SHESA ANDRIAS DREAM

\$ INDEXES

API +149.2
TI +78.9

CED	BW EPD	WW EPD	YW EPD	Milk	MARB	REA	BF
+16.9 4%	-2.7 3%	+61.5 99%	+84.5 99%	+22.9 55%	+0.32 25%	+0.53 99%	-0.064 70%

PERFORMANCE DATA

Act BW	Adj WW	Adj YW	Scrotal	FS	IMF	REA	FAT
74	614	993	40.0	5.5	2.49	12.33	0.19

SCAN DATA

- Calving-Ease Bull
- Homozygous Black and Homozygous Polled
- L382 is an ET Bold Venture son whose donor dam is a proven matron in our Simmental herd.
- CED, BW, and MCE traits all rank in the upper 10% of the purebred registry.
- His API index of 149 is an added attraction to breeders of Angus cattle.

44 VIRGINIA TECH VENTURE L384 ET

Birth Date: 9/14/23 Bull 4259723 Tattoo: L384

Simmental
PB SM

LKCC BOLD VENTURE 194F
3439419
MS CRYSTEEL VOLTAGE 194A
CDI INNOVATOR 325D
VPI SAVANNAH F884 ET
3537901
VPI SHESAVANNAH B467 ET

CNS DREAM ON L186
WS MARLA 276M
SS/PRS HIGH VOLTAGE 244X
BF MISS CRYSTEEL TANGO
TJ MAIN EVENT 503B
CDI MS SHEAR FORCE 49U
MCM TOP GRADE 018X
EBS SHESA ANDRIAS DREAM

\$ INDEXES

API +135.9
TI +79.5

CED	BW EPD	WW EPD	YW EPD	Milk	MARB	REA	BF
+10.7 65%	+0.4 35%	+72.5 75%	+100.6 85%	+22.9 55%	+0.27 35%	+0.63 95%	-0.082 30%

PERFORMANCE DATA

Act BW	Adj WW	Adj YW	Scrotal	FS	IMF	REA	FAT
84	569	928	39.0	5	2.55	11.95	0.14

SCAN DATA

- All-Purpose Bull
- Homozygous Black and Homozygous Polled
- Sire, Dam, and MGS all have double-digit CED scores which fortify L384's CED EPD.
- This ET Bold Venture son is a purebred flush-mate to Lot 43 and will deliver optimal performance to his offspring.
- Like his sire and his full brother, L384 will be a crowd favorite!



Online Bidding available at **WWW.SALERING.LIVE**

Hereford Bulls



VT HOUSTON L306

Lot 46

45 VT HOUSTON L303

Birth Date: 08/29/2023 Bull 44500933 Tattoo: L303 Polled Hereford

CHURCHILL SENSATION 028X
NJW 160B 028X HISTORIC 81E ET
P43829334 NJW 73S 38W DAYDREAM 160B

CRR 109 CATAPULT 322
VPI RACHELS BLAZE G902
P44042391 VPI RACHELS BLAZE C503

UPS DOMINO 3027
CHURCHILL LADY 7202 ET
NJW 76S P20 BEEF 38W ET
NJW P606 72N DAYDREAM 73S
CRR 719 CATAPULT 109
CRR 713 KELLY 0117
CHURCHILL RED BULL 200Z
VPI RACHELS BLAZE Z207

\$ INDEXES		
BMI\$	+448	
BI\$	+516	
CHB\$	+112	

CED	BW EPD	WW EPD	YW EPD	MM	MARB	REA	FAT
+2.7 56%	+0.4 10%	+54 59%	+83 69%	+39 2%	+0.3 78%	+74 8%	+0.22 46%

PERFORMANCE DATA				SCAN DATA			
Act BW	Adj WW	Adj YW	Scrotal	FS	IMF	REA	FAT
70	472	900	35.0	5.9	1.71	10.1	0.20

- Maternal Trait Building Bull
- Homozygous Polled
- Ultimate performance in key maternal traits includes an elite 1% for TEAT, upper 2% for MM and UDDR, and top 10% of the breed for an additional five key traits.
- Exceptional phenotype is the key characteristic of this young Houston sire as he exhibits a big hip with robust muscling.
- His fall-calving dam sells as lot 23.

46 VT HOUSTON L306

Birth Date: 09/01/2023 Bull 44530970 Tattoo: L306 Polled Hereford

SHF DAYBREAK Y02 D287 ET
SHF HOUSTON D287 H086
P44123641 SHF MISS 14 20Z D223

NJW 76S 4037 DURANGO SPIRIT 174X
VPI MILLIE E715
P43846005 VPI MILLIE C512

SHF YORK 19H Y02
SHF MISS M326 T08 ET
LOEWEN 44X 6X 20Z
SHF RADAR R125 T75
THM DURANGO 4037
NJW 55N STARDUST 76S
KCF BENNETT ENCORE Z311 ET
VPI MILLIE Z215

\$ INDEXES		
BMI\$	+479	
BI\$	+583	
CHB\$	+119	

CED	BW EPD	WW EPD	YW EPD	MM	MARB	REA	FAT
+0.5 75%	+3.9 76%	+82 1%	+126 1%	+34 10%	+1.9 28%	+1.06 1%	+0.042 77%

PERFORMANCE DATA				SCAN DATA			
Act BW	Adj WW	Adj YW	Scrotal	FS	IMF	REA	FAT
89	524	1000	37.0	6.1	2.22	11.2	0.19

- Genomic Leading Bull
- Homozygous Polled
- This Houston son is a masterpiece on paper with 10 key performance indicators measuring in the top 10% of the entire Hereford breed.
- He ranks in the elite 1% and leads the breed in WW, YW, CW, and REA and boasts all indexes in the top 5% of the Hereford registry.
- L306 is engineered for success as he posts an individual WWR of 105 with the backing of his elite matriarch E715 whose progeny averages are 99 and 103 for BW and WW, respectively.

47 VT GOLD RUSH L311

Birth Date: 09/30/2023 Bull P44530975 Tattoo: L311 Polled Hereford

NJW 79Z Z311 ENDURE 173D ET
CMF 1720 GOLD RUSH 569G ET
P4410801 LIII TFL C609 VICTORIA 1720

KT SMALLTOWN KID 5051
VPI RACHELS BLAZE F814
P43958508 VPI RACHELS BLAZE Z207

KCF BENNETT ENCORE Z311 ET
BW 91H 100W RITA 79Z ET
EFBEEF RESOLUTE CEO
LIII X651 RITA A045
NJW 73S W18 HOMETOWN 10Y ET
KT MS 0124 TIMES A WASTIN 2086
MSU TCF REVOLUTION 4R
DR RACHEL'S BLAZE 29F T20 ET

\$ INDEXES		
BMI\$	+515	
BI\$	+618	
CHB\$	+191	

CED	BW EPD	WW EPD	YW EPD	MM	MARB	REA	FAT
+7.5 17%	+1.9 31%	+63 20%	+106 12%	+33 14%	+4.3 4%	+8.1 4%	+0.002 16%

PERFORMANCE DATA				SCAN DATA			
Act BW	Adj WW	Adj YW	Scrotal	FS	IMF	REA	FAT
73	346	742	34.0	5.7	2.42	9.0	0.18

- Heifer/Carcass Bull
- Heterozygous Polled
- This elite Gold Rush son is a standout visually with moderate frame and sound structure.
- He is a herd changer that makes him a priority for any cow/calf program.
- L311 boasts a BWR of 96 with a big EPD spread from birth to yearling.
- This bull ranks among the elite 1% for CHB and upper 2% for his other indexes.
- He also measures in the top 5% of the breed for carcass indicators across his genetic profile.

48 VT HOUSTON L307

Birth Date: 09/02/2023 Bull 44500935 Tattoo: L307 Polled Hereford

CHURCHILL SENSATION 028X
NJW 160B 028X HISTORIC 81E ET
P43829334 NJW 73S 38W DAYDREAM 160B

PCR 3X CHIEF 507C
VPI RACHELS BLAZE G908
P44112664 VPI RACHELS BLAZE D611

UPS DOMINO 3027
CHURCHILL LADY 7202 ET
NJW 76S P20 BEEF 38W ET
NJW P606 72N DAYDREAM 73S
TH 49U 719T SHEYENNE 3X
PCR RHONDA SHELLI 330A
NJW 76S 4037 DURANGO SPIRIT 174X
VPI RACHELS BLAZE B410

\$ INDEXES		
BMI\$	+461	
BI\$	+533	
CHB\$	+110	

CED	BW EPD	WW EPD	YW EPD	MM	MARB	REA	FAT
+6.3 24%	+0.5 11%	+59 36%	+95 35%	+35 8%	-.02 90%	+6.0 21%	+0.062 92%

PERFORMANCE DATA				SCAN DATA			
Act BW	Adj WW	Adj YW	Scrotal	FS	IMF	REA	FAT
74	420	788	35.0	5.8	1.78	8.6	0.23

- Balanced Trait Bull
- Heterozygous Polled
- This Historic son highlights the peak of the breed within his genetic profile by ranking at or above the top 12% of the breed for eight of the most crucial inheritable performance measures.
- L307 generates unrivaled performance in growth and checks the boxes from a structural standpoint.



Commercial Bred Cows

49 1310

Birth Date: 9/10/2021

Tattoo: 1310 3/4 AN 1/4 SM

SIRE: RAPID FIRE

MGS: 6102 (CONNEALY COMRADE)

Bred to Dehavens Growth Fund M17; due approximately 10/14/2024

50 1319

Birth Date: 9/12/2021

Tattoo: 1319 1/2 AN 1/2 SM

SIRE: TG FRANCHISE

MGS: 4180 (BENNETT TOTAL)

Bred to Dehavens Growth Fund M17; due approximately 10/14/2024

51 1328

Birth Date: 9/14/2021

Tattoo: 1328 1/2 AN 1/2 SM

SIRE: TG FRANCHISE

MGS: 2134 (OCC GREAT PLAINS)

Bred to Dehavens Growth Fund M17; due approximately 10/14/2024

52 0325

Birth Date: 9/07/2020

Tattoo: 0325 3/4 AN 1/4 SM

SIRE: TG FRANCHISE

MGS: 4119 (BOYD NEW DAY 454)

Bred to Dehavens Growth Fund M17; due approximately 10/14/2024

53 0291

Birth Date: 8/15/2020

Tattoo: 0291 3/4 AN 1/4 SM

SIRE: CONNEALY COMMONWEALTH

MGS: 8129 (KM BROKEN BOW)

Lot 53A: Heifer calf born 9/15/2024, sired by M4 Alpha 267K, tattoo 4319.

COMMERCIAL FEMALES





BEEF CATTLE OPERATIONS

LOANS FOR:

- Cow/calf pairs, replacement heifers, stocker and feeder cattle
- Large and small tracts of land
- Barns, outbuildings, fences and roads
- Operating expenses
- Purchasing or leasing machinery, equipment and vehicles



FARM CREDIT

Loans for
Farms, Homes & Land!

800.919.FARM (3276)

FarmCreditofVirginias.com



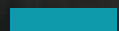
NMLS
#456965

Thank you to our Sponsors

SPONSORS


First Bank
& Trust Company

Experience the advantages of having local bankers that understand agriculture and put your farm first.



TALK WITH A LOCAL AG EXPERT TODAY.



www.firstbank.com | Member FDIC | 

667 West Main Street | Abingdon, VA 24212 | (276) 623-0128

OCTOBER 25, 2024 at 6:30 p.m. EDT



FOOD, BEVERAGE, CLERKING & ANIMAL DISPLAY

Back Row (L to R): **Food & Beverage** - Hannah O'Brien, Logan Kellum, Tyler Boshier, Wyatt Eavers, Trenton Johnson, Wylie Johnson, Shelby Rose, Heather Morrow

Middle Row (L to R): **Clerking** - JT Foster, Colin Hopper, Rosalie McGuirk*, Abigail Seeman, Stephanie Gardner

Front Row (L to R): **Animal Display** - Brooklyn Hensley, Grace Knick*, Allison Bower



SALE RING, LOAD OUT & CLEAN UP

Back Row (L to R): **Sale Ring, Load-out & Clean-Up** - Nathan Pratt*, Seth Wilbanks, Bruno Menza, Sammy Leach, Lucy Hurley, Melody Simpson

Middle Row (L to R): **Registration** - Emily Faulconer, Alayna Major, Morgan Marshall, Aubree Schaum, Josie Gore*

Front Row (L to R): **Advertising** - Kat Clement, Allison Allen, Aiden Shiflett* (Not Pictured)



DECORATIONS, CATALOG & SOCIAL MEDIA

Back Row (L to R): *Decorations* - Emily Sears*, Cooper Owen, Ryleigh Tayman
Front Row (L to R): *Catalog & Social Media* - Parker Epperley, Salem Sifford*

30TH ANNUAL HOKIE HARVEST SALE DEDICATEE



It is our distinct honor and privilege to dedicate this year's Hokie Harvest Sale to Dr. Terry Swecker for his everlasting support and enthusiastic involvement in this student-driven livestock merchandising course. After an illustrious 44-year career at Virginia Tech, Dr. Swecker retired this past June from the Virginia-Maryland College of Veterinary Medicine (VMCVM). Terry is from Stuarts Draft, VA and was among the first class of graduates from VMCVM in 1984, and after two years in private practice, he returned in 1986 for a veterinary residency and later obtained a Ph.D. degree in which Dr. Eversole served on his graduate committee.

After earning his Ph.D. degree in 1990, he became a faculty member in the veterinary school and was very influential in overseeing and governing the herd health program of the VT Beef Cattle Center. For the next 34 years, Dr. Swecker worked closely with Dr. Eversole, Christie McAvo, and Chad Joines in the management of the herd health program for the purebred and commercial cattle. Terry has been a key player and guest lecturer in Dr. Eversole's beef production and livestock merchandising courses over the last three decades.

According to Dr. M. Daniel Givens, Dean of VMCVM, 'Dr. Swecker made focused and impactful contributions to this college since its earliest days. As a student, faculty member, and administrator at the college, Terry has navigated multiple challenging situations with a calm and reassuring approach'. During his nine years as Director of the Veterinary Teaching Hospital, Dr. Swecker dealt with the adaptations to the COVID-19 pandemic. Among other notable accomplishments as Director are the addition of a veterinary social worker position, facilitating the development of small animal emergency and critical care, and initial planning for the proposed veterinary hospital expansion and renovation. Terry is proud of the approximately 1,200 DVM students, 50 interns, and 70 residents who finished their programs during his tenure and the dedicated staff and faculty who guided them through their journeys.

We are truly indebted to his countless hours of devoted service to the well-being of every bovine at the VT Beef Cattle Center. Not only has Dr. Swecker touched the lives of those 1,200 DVM students, but also has driven home the importance of herd health management to the 2,016 students who have enrolled in the 30-year history of the Livestock Merchandising course. We are ever so grateful for his dedication to teaching and inspiring all of us involved in production agriculture. Congratulations on your retirement and hopefully your golf game will continue to improve!

Cheers from your friend and colleague,

Dr. Eversole



HOW TO BID ONLINE

IT'S EASY AS A, B, C!

Step A

Type salering.live into your browser. Salering.live can be used on your phone, tablet or desktop. We strongly recommend using Google Chrome as your browser for the best viewing and bidding experience.

Step B

Click the "Login/Registration" button. First time users, click "Registration." Enter your personal information. Check box for "I Agree to the Terms Above." Click "Next Step." A confirmation email will be sent to the email address used in registration.

Salering.live reserves the right to refuse bidding credentials to any customer not meeting our specifications.

Step C

You are ready to go! You don't have to worry about a bidder number. As long as you are registered and logged in, you will be able to bid. Please remember you are on a highly sensitive web page. Please pay attention while scrolling or handling mobile/tablet devices.

Helpful Reminders!

PLEASE MAKE SURE YOU HAVE GOOD SERVICE! You should have, at bare minimum, two to three bars of service on your cellular devices. If you are using wifi, you need to have an upload speed of 5 mbps or more. Use www.speedtest.net to test your Internet.

Refresh your screen at sale time. Do not let your computer sit idle for over an hour and then return and try to bid. The website may have logged you out.

Salering.live does not handle money. All lots purchased will need to be paid to the farm directly or to sale management.



BEEF LEADERSHIP COUNCIL

AT VIRGINIA TECH

The Beef Leadership Council strives to advocate for the beef industry, build relationships between producers and students, promote student leadership growth, and hopes to secure a positive future for agriculture and the beef industry

Contact Us:
Salem Sifford, President
salems@vt.edu
Matthew Miller, Advisor
mamille6@vt.edu

**RAFFLE
TICKETS
FOR
SALE**

\$5 ticket
\$12 for 3 tickets
\$20 for 5 tickets
All Proceeds go towards
Beef Leadership Council



2024 HOKIE HARVEST ONLINE HORSE AUCTION

NEW THIS YEAR – Auction occurring through: <https://sporthorseauctions.com>

First 5 lots of the October Sport Horse & Pony Auction

Bidding Opens: Friday October 25th, 2024

Sale Videos: Monday October 14th, 2024

Bidding Closes: Wednesday October 30th, 2024

Digital Sale Portfolios: Monday October 21st, 2024

VT Huckleberry Dutch “Scott”

2024 Dartmoor Sporthorse Gelding
Blackertor Huckleberry Finn x Double Dutch
Dartmoor Pony Registry of America Eligible
Minimum Bid \$1200

VT Paint By Numbers “Reed”

2024 Sporthorse
Invite The Artist x Artemus Storm
APHA Registration Pending
Minimum Bid \$1200

Sprinkled In Gold “Tink”

2024 USEF Connemara Sporthorse Filly
BSF Golden Snitch x Miss Sprinkles
USEF & American Connemara Pony Society
Registration Pending
Minimum Bid \$1200

VT Aged To Perfection “Asiago”

2023 Appendix Quarter Horse Gelding
Hetakesmybreathaway x Its Smokin Mirrors
Registered AQHA & Eligible for PHBA
Minimum Bid \$1500

VT Lost My Stocking “Amaretto”

2022 Appendix Quarter Horse Gelding
When in Chrome x Whose Envious
Registered AQHA & NSBA
Minimum Bid \$1800

CONTACT US:

Facebook: [@VirginiaTechEquine](https://www.facebook.com/VirginiaTechEquine)

Equine Contact:

Natalie Slone, Equine Manager

Office: (540) 231-4366

Showcase Day Phone: (703) 473-2068

Email: nbduncan@vt.edu



Hokie Harvest Sale Horse Showcase

Friday October 25th, 2024 from 12pm-6pm

This is the only time when sale horses will be available for in-person viewing by prospective buyers.

Virginia Tech Campus – Equitation Barn – 472 Plantation Rd, Blacksburg, VA 24061

Training Details

All youngstock in the 2024 Hokie Harvest Online Horse Auction have been trained by students in the Equine Training and Marketing course taught through the School of Animal Sciences. Our youngstock were born, raised and trained on Virginia Tech properties with *Sprinkled In Gold* bred at our Middleburg Agricultural Research & Extension (MARE) Center. They are taught to lead, tie, stand for the farrier, load into a trailer and much more including desensitization to a variety of novel objects. Yearlings are additionally taught to lunge and carry tack. This year, our horses will be sold through Sport Horse Auctions in their October Sport Horse & Pony Auction. Conformation photos, training photos and movement videos of all sale horses will be available on the auction site as well as in each horse's photo album on Facebook. All horses are sold with a portfolio detailing their training progression and complete medical history. These portfolios will be available on the day of the Horse Sale Showcase as well as online the Monday prior. Contact Natalie Slone for questions regarding Pre-purchase Exam policies.



COLLEGE OF AGRICULTURE AND LIFE SCIENCES
SCHOOL OF ANIMAL SCIENCES
VIRGINIA TECH

Dr. Dan Eversole
3250 Litton-Reaves Hall (0306)
Blacksburg, VA 24061

Return Service Requested

Presort First-Class
US Postage
PAID
Boelte-Hall LLC

FIRST CLASS MAIL | PLEASE DO NOT DELAY



30TH Annual

HOKIE HARVEST SALE

FRIDAY AT 6:30 P.M. EDT

October 25, 2024

Virginia Tech - **Alphin-Stuart Livestock Teaching Arena** Blacksburg, VA

